



RELIANCE®

ORTHODONTIC PRODUCTS

RELIANCEORTHODONTICS.COM

Family Owned. Privately Held. Domestically Made.

ESTABLISHED 1981



MADE IN THE U.S.A.

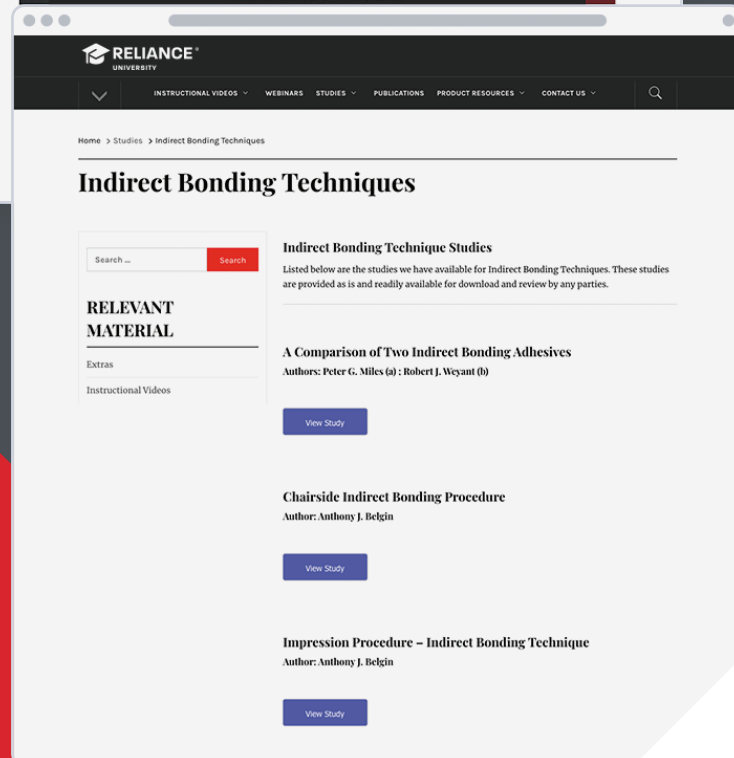
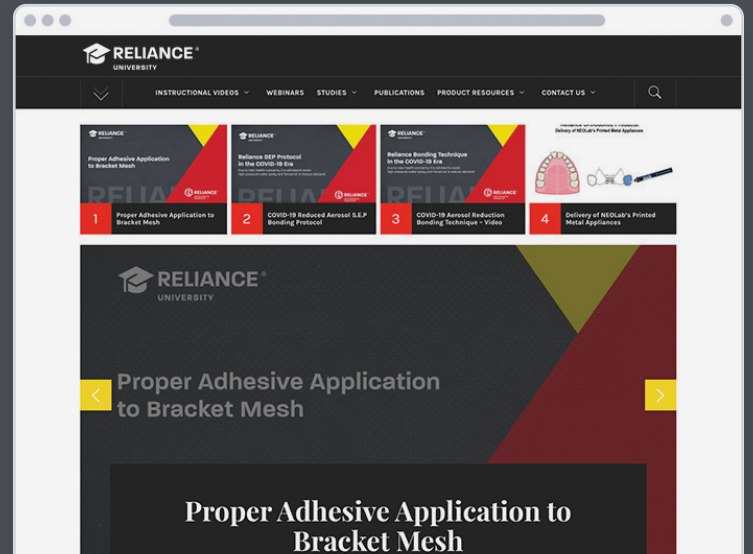
Reliance University



School's in Session

First of its kind orthodontic educational & instructional website

- ✓ Update clinical bonding techniques
- ✓ Reinforce staff training



Login Now!
RelianceU.tech

- ✓ Instructional Videos
- ✓ Literature Support
- ✓ Webinars & Livestreams
- ✓ Study Group

Table of Contents

- 01 RELIANCE UNIVERSITY
- 03 HYDROPHILIC ADHESION BOOSTER
- 03 THE EVOLUTION OF ORTHODONTIC BONDING RESINS
- 04 DECAL PREVENTION
- 05 LIGHT CURE BRACKET ADHESIVES
- 09 CHEMICAL CURE ADHESIVES
- 11 SPECIALTY PROCEDURES
- 12 CLEAR ALIGNER SUPPORT
- 13 BAND/APPLIANCE CEMENTS
- 17 RELIABOX
- 18 TOOTH PREPARATION
- 23 CLEAN UP & POLISHING
- 24 LINGUAL RETENTION
- 27 RESTORATIVE SOLUTIONS
- 28 ACRYLIC APPLIANCE BONDING
- 29 RELIAMOLD
- 30 TNT ARCHWIRES
- 31 RELASTICS
- 33 CUSTOM BASE INDIRECT BONDING
- 34 CLEAN BASE IDB ADHESIVES
- 35 ACCESSORIES
- 38 TERMS & CONDITIONS

MADE IN THE U.S.A.

All Reliance adhesive products are proudly manufactured in the U.S.A.



Hydrophilic Adhesion Booster



ASSURE® PLUS



ASSURE® PLUS UNIDOSE CAPSULES

ASSURE® PLUS

6 ml Assure® Plus All Surface Bonding Resin	#PLUS
2 ml Assure® Plus All Surface Bonding Resin	#PLUS2ML
50 Pack Assure® Plus 0.20 ml Unidose (10 ml)	#UAP50



4 out of 5 orthodontists use Assure Plus as their self-etch or total-etch primer.

THE MOST VERSATILE RESIN EVER DEVELOPED

- Enhances bond strength on all surfaces
- Tolerates moisture contamination
- Primes and conditions any tooth surface for bonding
- Effective on any enamel type
- Effective on any artificial substrate
- Eliminates hydrofluoric acid with porcelain crowns

CLINICAL APPLICATIONS

- Normal or atypical enamel
- Dentin or cementum
- Eliminates additional conditioners with
 - Stainless
 - Amalgam
 - Gold
 - Composite
 - Acrylic
 - Pontics
- Eliminates hydrofluoric acid application with
 - Porcelain
 - Lithium Disilicate
 - Zirconia

The Evolution of Orthodontic Bonding Resins

ADHESION BOOSTERS

ENAMEL PROTECTIVE SEALANTS



Decal Prevention



ORIGINAL PRO SEAL®



L.E.D. PRO SEAL®

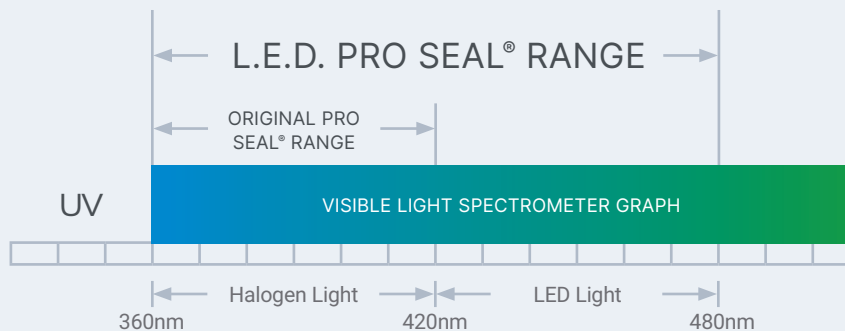
PRODUCT FEATURES

- Clinically proven for over 15 years
- Complete and extended enamel protection
- Full 2 year enamel protection proven and documented in numerous studies

PRODUCT FEATURES

- Cures with any curing light
- Full 2 year enamel protection proven and documented in numerous studies
- Also fluoresces under UV light.

PRO SEAL® LIGHT CURING WAVELENGTHS



PRO SEAL®

6 ml L.E.D. PRO SEAL®	#LEDPRO
6 ml PRO SEAL®	#PRO
UV Disclosing Light	#UVML



PLAQUE VISIBLE AT DEBOND



PLAQUE REMOVAL WITH POLISHING AT DEBOND

Pro Seal prevented plaque and tartar developing into decal by protecting the enamel integrity.



I swear by ProSeal to protect my patients' teeth from white spot lesions. The peace of mind it provides is truly invaluable!
- Michael K. DeLuke, DDS, MDS

INSTRUCTIONAL VIDEO

Using Pro Seal to Prevent Decalcification Available at RelianceU.tech



ENHANCE™ (A&B)



ENHANCE™ L.C.



ASSURE®



LIGHT BOND™ FILLED SEALANT



PRO SEAL®

STRENGTH



ASSURE® PLUS
Unparalleled Bond Strength

TODAY

PROTECTION



L.E.D. PRO SEAL®
Unparalleled Decal Prevention

Light Cure Bracket Adhesives



GO TO® COLOR CHANGE
COMING SOON!



GO TO®

LIGHT CURE BRACKET ADHESIVE



PUSH SYRINGE



PUSH SYRINGE TIPS

NEWLY DEVELOPED - SUPERIOR WORKING PROPERTIES

- Proven bond strength and consistency
- Unique viscosity easily penetrates bracket pads
- No bracket drift – stays in place until cured
- New proprietary microfiller construction
- One-piece flash removal – "ropes" off bracket periphery
- Translucent finish matches any tooth shade
- Maximum bond strength
- Easy removal and cleanup
- UV disclosing agent – fluoresces on the tooth under black light

CLINICAL APPLICATIONS

- Bracket and tube bonding
- Fixed lingual retainer bonding
- Bonds all metal, ceramic and composite attachments
- Reliamold compatible (see Reliamolds on page 29)
- Clear aligner attachment material
 - Viscous to allow for pre-loading of trays

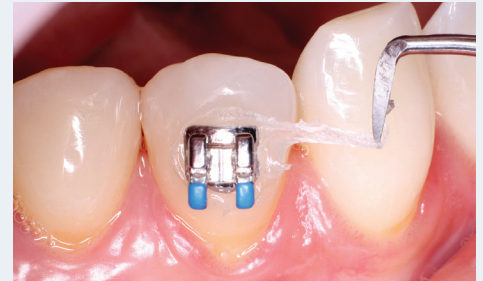
GO TO®

4g Paste Syringe

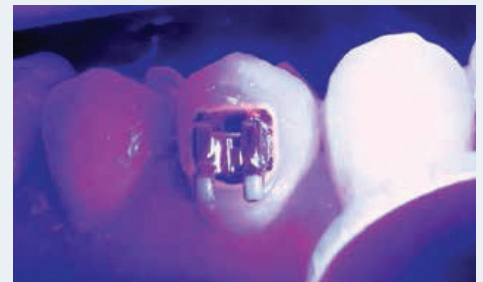
#GTP

4g Paste In Tips (10 Tips)

#GTT



EXCESS ADHESIVE ROPES OFF IN A SINGLE PIECE FROM THE PERIPHERY OF THE BRACKET



BLACKLIGHT FLUORESCENT



CRYSTAL CLEAR FOR UNIVERSAL SHADE MATCHING WITH CLEAR ALIGNERS

RECOMMENDED PRIMER WITH
GO TO® ADHESIVE

Assure® Plus (Page 3)



- * Etchants and Conditioners appear on page 17
- * Bonding Accessories appear on page 35
- * Auxiliary Bonding Supplies appear on page 35



GO TO® ADHESIVE WORKING PROPERTIES ARE IDEAL FOR CLEAR ALIGNER ATTACHMENTS



1. PUMICE



2A. ETCH



2B. ETCH APPLICATION



3. POST ETCH CHALKY SURFACE



4A. ASSURE® PLUS



4B. ASSURE® PLUS APPLICATION



4C. ASSURE® PLUS AIR DRY



4D. ASSURE® PLUS CURE (OPTIONAL BUT RECOMMENDED)



5. ADHESIVE APPLICATION



6. TRAY SEATING



7. CURE



8. GOTO® MIMICS ALL TOOTH SHADES

Light Cure Bracket Adhesives



Multi-Purpose Composite

T.K.O. is a versatile composite with strength and a low modulus of elasticity. T.K.O. composite paste is effective in both laboratory and chairside applications.

ONLY FROM  RELIANCE®

Proprietary Working Properties for Specific Applications

CURES STRONG AND SMOOTH WITH MODEST PLIABILITY

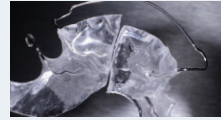
- Resists opposing enamel wear
- Soft cure resin matrix for patient comfort

VISCOSITY PERFECTED FOR VARIED APPLICATIONS

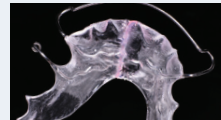
- Controlled needle tip dispensing
- Flexes and recovers with acrylic appliances

AVAILABLE IN TWO SHADES

- **PINK SHADE**
 - Aids in placement, remove and clean up
 - Matches acrylic appliances
 - Fluoresces under blacklight
- **CLEAR**
 - Aesthetic
 - Fluoresces under blacklight



ACRYLIC APPLIANCE REPAIRS



OCCUSAL BUILD-UPS



BITE OPENING RAMPS



LABORATORY BLOCK OUT APPLICATIONS



T.K.O.® (ORDER INFORMATION)

3.4g Syringe Pink Shade with 5 Tips #TKOP

3.4g Syringe Clear with 5 Tips #TKOC

#TKOPLV Coming Soon



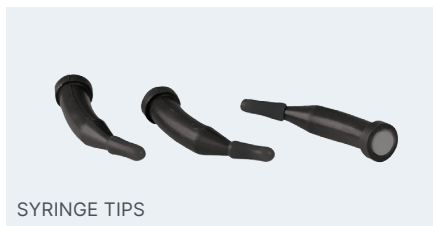
INSTRUCTIONAL VIDEO

Bonding Posterior Occlusal Buildups Available at RelianceU.tech

 **LIGHT BOND™**
LIGHT CURE BRACKET ADHESIVE



PUSH SYRINGE



SYRINGE TIPS

TIME TESTED PERFORMANCE

- Unrivaled bond strength
- Highly filled paste
- Smooth tacky viscosity
- Consistent successful bonds
- Easy flash and debonding cleanup
- Designed for Doctor or staff bracket placement without drift

CLINICAL APPLICATIONS

- Routine bracket and tube bonding
- Intraoral bonding of metal, ceramic or composite attachments
- Indirect bonding to stone/resin models

LIGHT BOND™	SYRINGE	TIPS
Regular Viscosity Syringe*	#LBPPF	#LBPTF
Medium Viscosity Syringe	#LBMPPF	#LBMPTF
Thin Viscosity Syringe	#LBTPPF	#LBTPTF
Blue Tinted Syringe	#LBBPPF	#LBBPTF

* Most Popular Choice

RECOMMENDED PRIMER WITH LIGHT BOND™ ADHESIVE

Assure® Plus (Page 3)



- * Light Bond™ sealant appears on page 20
- * Etchants and Conditioners appear on page 19
- * Bonding Accessories appear on page 35
- * All syringe applicators contain 5g of paste with Fluoride
- * Auxiliary Bonding Supplies appear on page 29

 **PAD LOCK®**
LIGHT CURE FLUORESCING ADHESIVE



PUSH SYRINGE

BONDS CHEMICALLY AND MECHANICALLY

- Bonds chemically to metal bases
- Paste fluoresces under black light for flash and debonding cleanup

CLINICAL APPLICATIONS

- Metal bracket and tube bonds
- Indicated for fine grade mesh bases

PAD LOCK®

4.5g Pad Lock® Paste in Push Syringe with Fluoride #PLPF

Chemical Cure Adhesives



TIME TESTED CONSISTENCY

- Microfilled paste
 - Unrivaled strength
 - Smooth, tacky viscosity
 - No bracket drift
- Self curing
 - Full polymerization
 - A&B mix system
 - 2.5 minute working time
- Easy removal and cleanup
- Contains Fluoride

CLINICAL APPLICATIONS

- Routine clinical bonding
- Bracket and tube bonding

AVAILBALE IN DUAL CURE

- Initial light cure option
 - 10 second exposure tacks bracket in position
 - Allows quick and accurate positioning
- Chemical cure - time activated
 - 4 minute working time
 - Total polymerization under bases
- Contains Fluoride

PHASE II® & PHASE II® DUAL CURE

PASTE COMPONENTS

Paste A 6g Syringe	#1PSAF
Paste B 6g Syringe	#1PSB
Paste A 18g Jar	#PJAF
Paste B 18g Jar	#PJB
Dual Cure Paste A 6g Syringe	#1DCSAF

RECOMMENDED PRIMER WITH PHASE II® ADHESIVE

Assure® Plus (Page 3)



- * Etchants & conditioners appear on page 19
- * Bonding accessories appear on page 35
- * Auxiliary Bonding Supplies appear on page 29

 **EXCEL®**
CHEMICAL CURE SPECIALTY ADHESIVE



EXCEL®	
Excel® Regular Paste A in 6g Screw Syringe with Fluoride	#1ERSAF
Excel® Regular Paste B in 6g Screw Syringe	#1ERSB
Excel® Regular Paste A in 12g Jar with Fluoride	#ERJAF
Excel® Regular Paste B in 12g Jar with Fluoride	#ERJB

TIME TESTED PERFORMANCE

- Unsurpassed bond strength
- Thin, creamy consistency
- 3 minute working time
- Contains Fluoride

CLINICAL APPLICATIONS

- Indirect bonding adhesive
- Bonded acrylic appliances

 **RELY-A-BOND®**
NO MIX BRACKET ADHESIVE



RELY-A-BOND® COMPONENTS	
3.5g Paste In Syringe	#1RPP
16g Primer	#RPRF

1 STEP / CONTACT ADHESIVE

- 25 second working time
- Chemical cure - no light required
- Saves time and material
 - No Mixing
 - Minimizes adhesive per bond
- Highly filled paste
 - Increased bond strength
 - Tacky viscosity
 - Prevents bracket drift

Specialty Procedures



RELIAWAX®

WAX-LIKE PROTECTION IN A SYRINGE

- Light cure gel in a syringe
 - Controlled application—perfect viscosity
 - Cures clear, smooth, and flexible
- Outperforms traditional patient wax
- Fluoresces under blacklight
 - Facilitates complete coverage and cleanup
- Semi permanent application
 - Remains in place from one appointment to the next
 - Withstands routine brushing and eating
- Single piece removal
 - Entire protective layer removes in one piece
- Effective block out material

RELIAWAX®

1.5 GM Reliawax® Syringe w/ 10 Tips #RWX



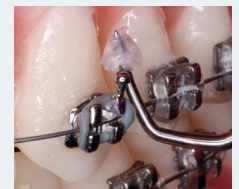
CONTROLLED APPLICATION



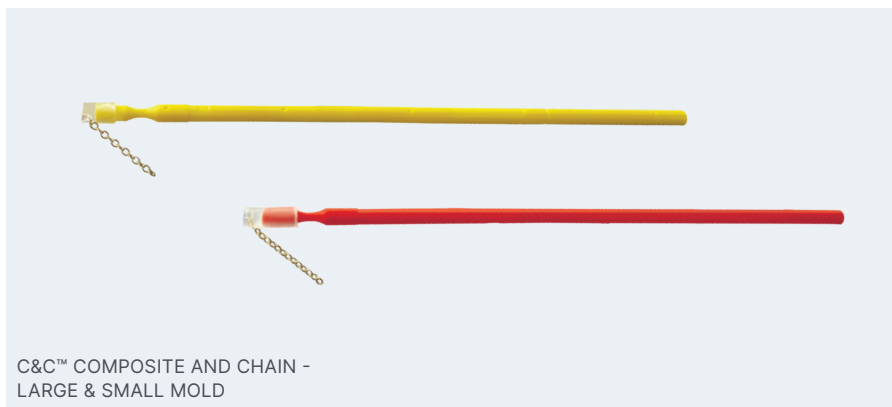
SEMI-PERMANENT CLEAR PROTECTION



FLUORESCES UNDER BLACK LIGHT



ONE PIECE REMOVAL



C&C™ COMPOSITE AND CHAIN - LARGE & SMALL MOLD

REVOLUTIONIZES IMPACTED EXTRUSION PROTOCOLS

- Unparalleled strength
 - The C&C™ System does not use protruding metal attachments. Our patent pending design molds a base with composite – adapting flush to any palatal or buccal exposure.
- Painless removal
 - Instead of painfully breaking a bracket off a mobile tooth – the C&C™ is ground down with a bur – resulting in less patient discomfort.

C&C™

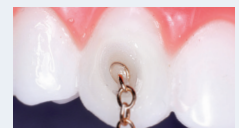
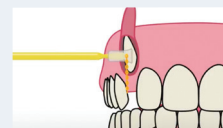
1 Disposable Large Attachment Mold with Chain #DCCP

1 Disposable Small Attachment Mold with Chain #DCCO

1.5 g FlowTain™ Flowable Composite w/ 10 tips #FT



FILL MOLD WITH FLOWABLE COMPOSITE



DELIVER C&C™ MOLD TO ENAMEL AND CURE



Utilizing Chain & Composite System Available at RelianceU.tech

Clear Aligner Support

BOND ALIGNER® LIGHT CURE ALIGNER ADHESIVE



BOND ALIGNER®

BONDS HOOKS AND BUTTONS TO CLEAR ALIGNERS

- No surface conditioning required
- Will bond any button or hook to all clear aligner materials
- Bonds without plastic preparation, primers, or conditioners
- A clear, light-cure paste for excellent aesthetics
- Low modulus of elasticity
 - Flexes with trays

BOND ALIGNER®

1.4 g Bond Aligner® Syringe With 5 Tips #BA

Button Hook Attachment #RMBU



1. APPLY TO BONDING BASE



2. DELIVER AND POSITION

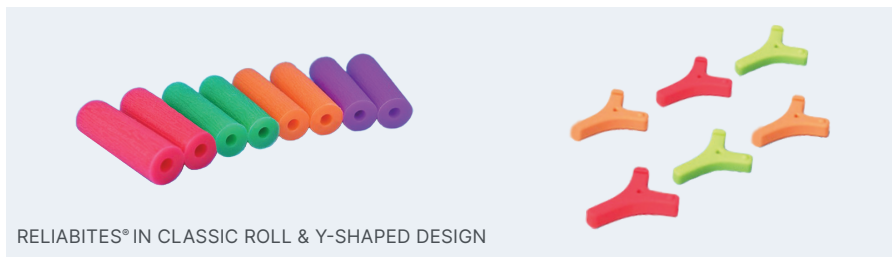


3. LIGHT CURE



BONDED ALIGNER

RELIABITES® ALIGNER CHEWIES



RELIABITES® IN CLASSIC ROLL & Y-SHAPED DESIGN

FULLY SEATS ALIGNERS FOR IMPROVED TREATMENT

- Applies uniform force to properly seat aligners
- Classic cylindrical rolls or versatile Y-shaped designs
- Food grade elastomer material
- Ensures a snug fit and complete engagement
- Various colors and flavors

RELIABITES®

Flavor	Rolls	Y-shaped	Firmness
Apple	-	#RBYSA	Soft
Grape	#RBG	#RBYFG	Firm
Mint	#RBM	#RBYFM	Firm
Orange	#RBOR	#RBYSOR	Soft
Peach	-	#RBYFP	Firm
Strawberry	#RBS	#RBYSS	Soft

* Firmness is only applicable for Y-Shaped Reliabites



CLASSIC ROLL DESIGN



Y-SHAPED DESIGN

* Rolls packaged in pairs and sold 10 to a pack; 20 rolls total

* Y-shaped option sold 10 to a pack

RELIAPRY® CLEAR ALIGNER REMOVER TOOL



RELIAPRY®

REMOVES ALIGNERS IN THE QUICKEST & EASIEST WAY POSSIBLE

- Protects soft tissue and gums with specially-designed hook
- Works with multiple aligner brands
- Non-slip ring handle is undulated to provide a perfect and easy grip
- Fits inside most aligner cases
- Tamper-free packaging
- BPA-Free & Phthalate-Free
- Dishwasher safe

RELIAPRY®

ReliaPry® #AR100



HYGIENIC WAY OF REMOVING ALIGNERS



KEEPS FINGERS OUTSIDE OF MOUTH

* Each patient pack contains 1 ReliaPry tool. Contains 100 patient packs. One color only.

* Website product page: www.relianceorthodontics.com/ReliaPry

Band/Appliance Cements



PUSH SYRINGE



LUER LOCK SYRINGE

INDUSTRY LEADER IN BAND CEMENT

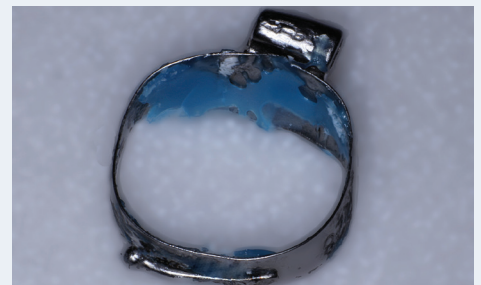
- Single paste system
- Light activated
- Resin base glass ionomer
 - High Fluoride release
- Natural or blue shade
- All purpose cement
 - Ultra Band-Lok® can also be used to bond large acrylic appliances and as an occlusal build-up material.
- Bonds to metal
 - Ultra Band-Lok® will bond chemically to stainless steel bands. Removal is all in one piece with cement in the appliance, making cleanup effortless.

CLINICAL APPLICATIONS

- Band cementation
- Occlusal build ups
 - Occlusal buildup instructional video available at RelianceU.tech
- Acrylic appliances - Hyrax, MARA, RPE, etc.
 - Acrylic appliance instructional video available at RelianceU.tech
- Lab block out material

ULTRA BAND-LOK®

5g Ultra Band-Lok® Syringe	#UBLPP
5g Ultra Band-Lok® Syringe Blue Shade	#UBLBPP
5g Ultra Band-Lok® Syringe w/ 5 Tips	#LLUBLP
5g Ultra Band-Lok® Syringe Blue Shade w/ 5 Tips	#LLUBLBP
(50) Luer Lock Dispensing Tips	#TIPS50
(5) Luer Lock Dispensing Tips	#TIPS5



BONDS TO METAL - REMOVES WITH THE APPLIANCE AT DEBAND



OCCLUSAL BUILDUP



INSTRUCTIONAL VIDEO

Bonding Posterior Occlusal Buildups
Available at RelianceU.tech



Revolutionary New Glass Ionomer Band Cement

- Adheres aggressively to metal
- Secure band adhesion
- Bonds in severely contaminated fields (saliva, blood, or water)
- High compressive & tensile strength
- Contains fluoride – protects enamel

ONLY FROM  **RELIANCE**®



- Adheres to metal during removal
- Reduces cleanup time
- Resists washout under band



- Powder/Liquid mix
- Dual cure – Chemical or light activated



- Smooth consistent mix
- Natural or blue shade



GLASSLOK STARTER KIT *

- 15g Powder
- Spatulas
- Measuring Scoop
- 15cc Liquid
- Mixing Pads

GLASSLOK® ECONOMY KIT *

- 100g Powder
- Spatulas
- Measuring Scoop
- (3) 25g Liquid
- Mixing Pads

GLASSLOK®	
GlassLok® Natural Shade Starter Kit*	#GLS
GlassLok® Blue Shade Starter Kit*	#GLSB
GlassLok® Natural Shade Economy Kit*	#GLE
GlassLok® Blue Shade Economy Kit*	#GLEB
GlassLok® Powder (15g)	#GLP15
GlassLok® Powder - Economy Size (100g)	#GLP100
GlassLok® Liquid Natural Shade (15g)	#GLL15
GlassLok® Liquid Natural Shade Economy Size (25g)	#GLL25
GlassLok® Liquid Blue Shade (15g)	#GLL15B
GlassLok® Liquid Blue Shade Economy Size (15g)	#GLL25B

Band/Appliance Cements



RECOMMENDED CEMENT FOR PRINTED METAL APPLIANCES



BAND-LOK®
MIX PASTE BAND CEMENT



SELF MIX DUAL SYRINGE & SELF MIX CANULA TIPS



SCREW SYRINGES

"A" PASTE

"B" PASTE

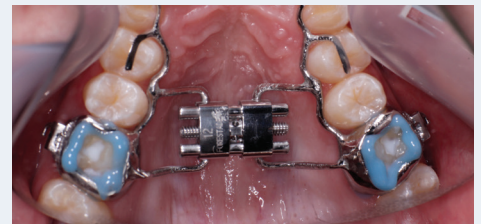
THE ORIGINAL, TIME-TESTED COMPOMER BAND CEMENT

- Bonds chemically to metal
 - Secure band cementation
 - Easy, clean removal
- Self mix dual syringes
 - Tips mix and dispense paste
 - Proportional paste mix
 - Eliminates spatulating
- Dual cure - light and/or chemical
 - Initial tack cure, yet full polymerization is always achieved
 - Four minute working time
- Natural or blue shade

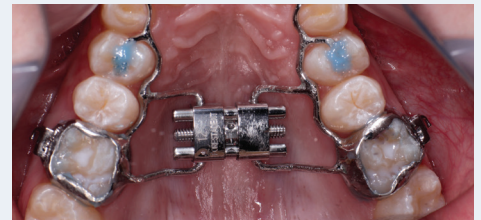
BAND-LOK®	
5gm Paste A / 5gm Paste B (Includes 15 Self Mix Tips) Natural Shade	#SMBL
5gm Paste A / 5gm Paste B (Includes 15 Self Mix Tips) Blue Shade	#SMBLB
Self Mix Tips (15)	#SMT
SCREW SYRINGES 6g PASTE	
Paste A Syringe Natural Shade	#BLSA
Paste A Syringe Blue Shade	#BLSAB
Paste B Syringe	#BLSB



SELF MIX SYRINGE ELIMINATES SPATULATION



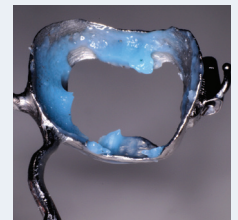
PERFECT VISCOSITY FOR PRECISE APPLICATION



ALWAYS ACHIEVES FULL POLYMERIZATION



TACK CURED
FLASH REMOVED
IN ONE PIECE



METAL BONDING
REDUCES CLEAN UP
AT DE-BAND

CROWN-LOK™
METAL CROWN LUTING CEMENT



SELF MIX DUAL SYRINGE (BLUE SHADE ONLY) & SELF MIX CANULA TIPS



SCREW SYRINGES

"A" PASTE

"B" PASTE

CROWN-LOK®

5gm Paste A / 5gm Paste B (Includes 15 Self Mix Tips) Blue Shade	#SMCLB
--	--------

Self Mix Tips (15)	#SMT
--------------------	------

SCREW SYRINGES 5g PASTE

Paste A Syringe Natural Shade	#CLSA
-------------------------------	-------

Paste A Syringe Blue Shade	#CLSAB
----------------------------	--------

Paste B Syringe	#CLSB
-----------------	-------

SECURE METAL CROWN AND BAND CEMENTATION

- Bonds chemically to stainless steel
- Simplified removal and cleanup
- Two minute working time
- Five minute set time
- Natural or blue shade
- Contains Fluoride
- Syringe choices
 - Screw syringe
 - Dual syringe - self mix
 - Tips mix and dispense paste
 - Proportional paste mix
 - Eliminates spatulating

✓
**PRELOAD,
 ORGANIZE &
 STORE UNTIL
 BONDING**

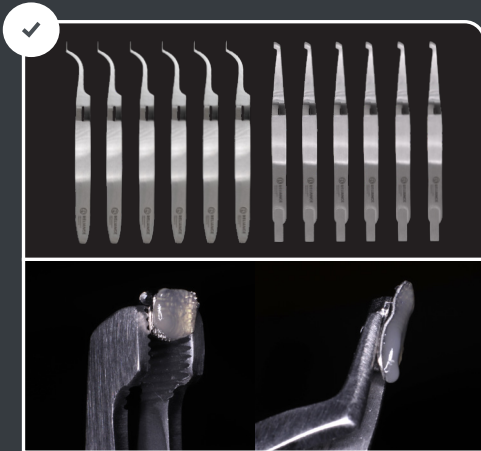


Your New Bonding Toolbox

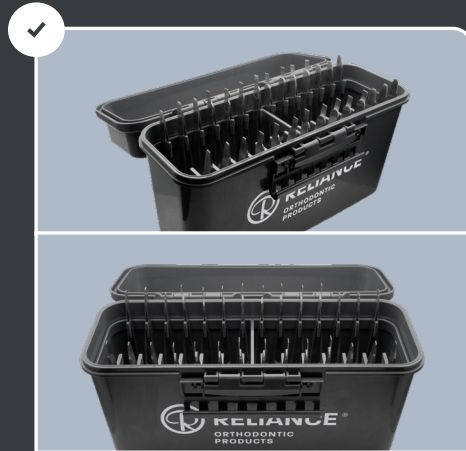
- ✓ Organize and improve bonding efficiencies
- ✓ Reduce chair time by 15 minutes at bracket placement
- ✓ Store pre-pasted brackets up to 7 days



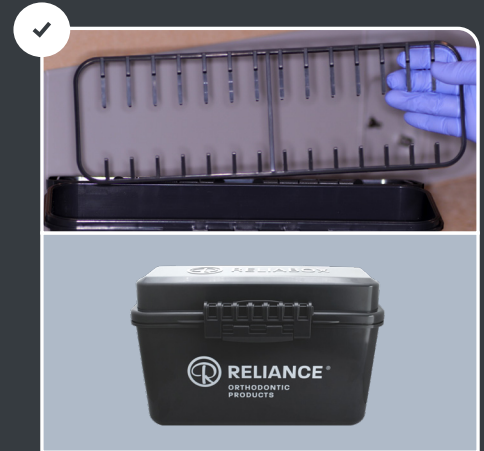
ONLY FROM RELIANCE®



- Reverse action bracket holders
- Separate holder for each tooth
- Appliances pre-pasted and pre-loaded on holders—ready to bond



- Holders organized in ReliaBox by tooth and quadrant
- A holder stored for each pre-pasted bracket



- Mounting posts on a removable rack
- Box sealed from air and light
- Adhesive protected up to 7 days

CLINICAL UPDATE

ReliaBox Improves Contamination Control

- Used holders are placed safely aside
- Improved bonding efficiencies promote saliva contamination control

ORDER INFORMATION

ReliaBox Kit Contains: 1 box, 12 RBTP, 16 RBTA	#RBXK
ReliaBox (1)	#RBX
Posterior Holder (1)	#RBTP
Anterior Holder (1)	#RBTA

Tooth Preparation



ETCHMASTER®

STARTER KIT

Etchmaster Starter Kit	#EMHA
------------------------	-------

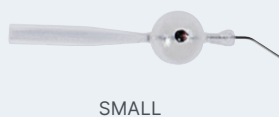
SMALL TIPS

Regular Tips 25 Pk	#EMTRS
Lingual Tips 25 Pk	#EMTLS
Regular Tips 50 Pk	#EMTRS50
Lingual Tips 50 Pk	#EMTLS50

LARGE TIPS

Regular Tips 25 Pk	#EMTRL
Lingual Tips 25 Pk	#EMTLL
*90 Micron 25 Pk	#EMTRL90

REGULAR TIPS



LINGUAL TIPS



- * Etchmaster Handpiece Starter kit includes
 - 4 Hole Handpiece Attachment
 - (5) Regular Small aluminum Oxide Tips
 - (5) Lingual Small aluminum Oxide Tips
- * Recommended for removing composite from bracket bases and microetching stainless steel appliances. Not recommended for use on enamel.

MICROETCHING MADE CLEAN AND EFFICIENT

- Precise surface microetching
 - Increases surface retention
 - Insures properly prepped surface
 - Maximizes bond strength on all surfaces
- 4 hole handpiece
 - Standard airline attachment
 - Easy chairside engagement
 - Stainless steel construction
- Pre-loaded cartridge tips
 - Disposable, no-mess application
 - No aluminum oxide management
 - 50 micron aluminum oxide
 - 2 tip sizes
 - Small (6 teeth)
 - Large (18 teeth)

CLINICAL APPLICATIONS

- Lingual bonding
- Artificial substrate bonding
- Molar prep for bonds or bands



SURFACE MICROETCHING



Bonding to Various Artificial Substrates Available at RelianceU.tech

Tooth Preparation



USEP®

ULTRA SELF ETCHING PRIMER



USEP®

ONE STEP ETCHANT AND PRIMER

- Combines preparatory etching and priming into one simple step
- Effective and efficient tooth prep
- Reduces chairtime
- Single liquid application – No mixing
 - Scrub onto enamel for 5 seconds
 - Air dry
 - Apply Assure Plus
 - Air dry
 - Deliver bracket and cure
- Effective for all enamel surfaces
 - Bracket and Tube bonding
 - Buildups
 - Increasing band cement retention
 - Reliamold delivery
- Product must be refrigerated nightly

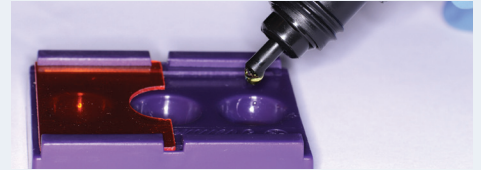
INCREASE ANY S.E.P. STRENGTH WITH ASSURE PLUS

Assure® Plus (Page 3)



USEP®

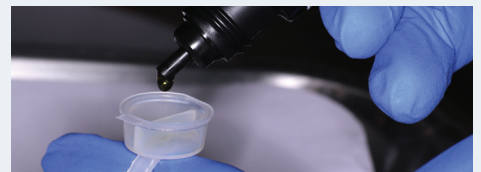
6ml Bottle	#USEP
2ml Bottle	#USEP2ML



DISPENSE ULTRA S.E.P. INTO CHAIRSIDE WELL, NO MIXING REQUIRED

* Chairside wells appear on page 36

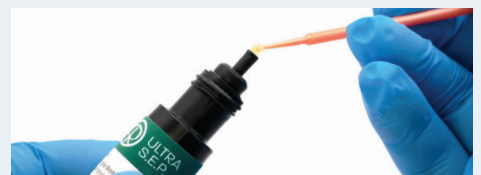
OR



DISPENSE ULTRA S.E.P. INTO RELIANCE DUAL RING WELLS. NO MIXING REQUIRED

* Mixing wells appear on page 36

OR



DRASTICALLY REDUCE MATERIAL COST ON REBONDS BY SATURATING A MICROBRUSH WITH A SINGLE-TOOTH VERTICAL DISPENSE



WITH A MICRO-BRUSH, AGGRESSIVELY SCRUB ULTRA S.E.P. ONTO TOOTH FOR 5 SECONDS



AIR DRY FOR 2-3 SECONDS BEFORE PLACING ATTACHMENT/APPLIANCE

RELiance S.E.P.™
SELF ETCHING PRIMER



RELiance S.E.P.™

S.E.P.™ Kit (Contains all components)	#SEPPRO
Refill Cartridges (4ml)	#SEPR
Click Syringe Dispenser	#SEPD
Mixing Well w/ Light Impervious Shield	#1SEPW

- Etchant and bonding primer
- One step application
- Click-syringe dispenses pre-measured amounts
- Each dispensing click conditions 12-14 teeth
- No need to etch before applying S.E.P.

ASK®
ALL SURFACE BOND ENHANCEMENT KIT



ASK®

ASK® Kit	#ASK
----------	------

- * ASK® Kit includes
- (1) Etchmaster intra-oral sandblaster
 - (5) Labial pre-loaded 50 micron aluminum oxide tips
 - (5) Lingual pre-loaded 50 micron aluminum oxide tips
 - (1) 6 ml Assure Plus
 - (1) 8cc Porcelain Conditioner

PREPS ANY ARTIFICIAL SUBSTRATE

- Everything needed for bonding any artificial substrate
- Maximum bond strength with no additional primers
- Wet or dry, normal or atypical enamel, composite, metal, porcelain, acrylic and zirconia

Tooth Preparation

BLUE GEL ETCHANT



BLUE GEL ETCHANT

- Controlled and even application
- Excellent for lingual retention (page 25) or large acrylic appliances (page 28)
- 35% phosphoric acid
- Contains antimicrobial B.A.C.

BLUE GEL ETCHANT

Contains 5g syringe Gel Etchant with 10 tips #BEGS



BLUE SHADE ENSURES UNIFORM COVERAGE

GEL ETCHANT



SYRINGE W/ TIPS 9g BOTTLE 18g JAR

- 37% phosphoric acid
- Controlled application

LIQUID ETCHANT



9g BOTTLE 23g BOTTLE 23g CHERRY FLAVOR

- 37% phosphoric acid
- Green disclosing tint
- Regular or cherry flavor

GEL ETCHANT

6.5g Syringe w/ 20 Tips	#EGSS
19tips10	#
9g Bottle	#EG9
18g Jar	#EG18

LIQUID ETCHANT

9g Bottle	#EL9
23g Bottle	#EL24
23g Cherry Flavor	#EL24C

PORCELAIN CONDITIONER FOR BONDING TO CERAMIC CROWNS



PORCELAIN CONDITIONER

- Effective with porcelain, zirconia and lithium disilicate
- Product must be refrigerated nightly

PORC ETCH™ PORCELAIN ETCHING AGENT WITH BARRIER GEL



PORC ETCH™

- Preps porcelain crowns for bonding

PORCELAIN CONDITIONER®

8cc Porcelain Conditioner #PO

PORC ETCH™

7g Porc Etch™ w/ Barrier Gel #POE

INSTRUCTIONAL VIDEO

Ceramic bonding instructional video Available at RelianceU.tech

 **ASSURE®**
THE ORIGINAL UNIVERSAL BONDING RESIN

ASSURE®

6ml Assure® Universal
Bonding Resin

#AS



ASSURE®

- Bonding primer and enhancer
- Typical or atypical enamel
- Metal and composite restorations

 **LIGHT BOND™ SEALANT**
LIGHT CURE RESIN

LIGHT BOND™ SEALANT

	REGULAR	FILLED
3g	#LBS3F	#LBFSF
3g (No Fluoride)	#LBS3	
7g	#LBS7F	#LBFS7F



LIGHT BOND™ SEALANT

- Bonding primer and sealant
- Available with or without quartz filler

Clean Up & Polishing



STEP 1 – BULK COMPOSITE REDUCTION



- 18 fluted carbide
- Quick removal of bulk composite
- Gentle on enamel
- Use with or without H2O

SOLD INDIVIDUALLY

Carbide Bur 118S	#RSB
	
Carbide Bur 118L	#RSBL
	
Carbide Bur 218	#RSB2
	
Carbide Lingual Bur 815	#RSB815
	

STEP 2 – RESIDUAL COMPOSITE REMOVAL



- Polishes tooth surface
- Black point discloses when composite is fully removed
- Removes residual composite
- Does not create heat

Straight Hand Piece (Pack of 12)	#RSPHP
	
Latch (Pack of 12)	#RSPL
	
Friction Grip (Pack of 12)	#RSPFG
	

STEP 3 – FINISHING & POLISHING



- Pre-packaged—sterile cups for individual patient use. Pre-mixed—just open and apply with prophy cup.
- No added chemicals, flavoring, fluoride or oils.
- Enamel polisher—1st & Final® can be used as final polishing step with the Reliance Renew™ Finishing System.
- Restore™ Diamond Polishing Paste for restoration of glaze on artificial surfaces.

1st & Final® (200 sterile cups)	#FF
	
2g Syringe Restore™	#RESPP2
	

Lingual Retention

L.C.R.™ LIGHT CURE RETAINER ADHESIVE



L.C.R.™

L.C.R.™	
5g L.C.R.™ Paste in Push Syringe	#LCR
1.5g L.C.R.™ Paste in Push Syringe w/ Tips	#LCR15
5g L.C.R.™ Paste in Tips (11)	##LCRT5
5 - 15 gauge disposable contra-angle tips	#TIPS5
50 - 15 gauge disposable contra-angle tips	#TIPS50
Luer Lok Syringe Wing	#FTWING

* LCR syringe pictured with optional "wing" to allow for more comfortable and ergonomic dispensing

- Micro+ nano fill for flowable consistency with durability of highly filled composite
- Effortlessly slumps over wire
- Fluoresces w/blacklight
- Cures to a glassy finish
- Patient comfort - reduced wear
- Developed for BLR applications

GO TO® LIGHT CURE BRACKET ADHESIVE



PUSH SYRINGE TIPS

* Full description on page 5

FLOWTAIN™ LIGHT CURE FLOWABLE COMPOSITE



FLOWTAIN™

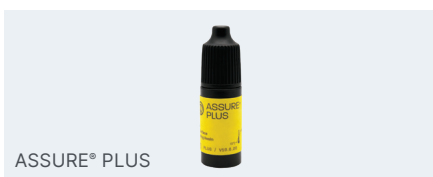
BLR APPLICATION

- Thixotropic viscosity
- Cures glassy smooth
- Slumps over wire
- Fluoresces w/ blacklight

* Full description on page 33

GO TO®	
4g Paste In Tips	#GTT
FLOWTAIN™	
1.5 g Flowtain™ With Tips (10)	#FT
10 - 19 gauge disposable contra-angle tips	#19TIPS10
50 - 19 gauge disposable contra-angle tips	#19TIPS50

ASSURE® PLUS ALL SURFACE BONDING RESIN



ASSURE® PLUS

BLR APPLICATION

- Enhances bond strength
- Overcomes mild contamination

* Full description on page 3

ETCHMASTER® HANDPIECE BONDING PRIMER AND ENHANCER



ETCHMASTER® HANDPIECE

BLR APPLICATION

- Mechanically prepares tooth surface

* Full description on page 17

ASSURE® PLUS	
6 ml Assure® Plus All Surface Bonding Resin	#PLUS
2 ml Assure® Plus All Surface Bonding Resin	#PLUS2ML
50 Pack Assure® Plus 0.20 ml Unidose (10 ml)	#UAP50
ETCHMASTER® HANDPIECE	
Etchmaster Starter Kit	#EMHA

Lingual Retention

ORTHO FLEXTECH® **FLEXIBLE LINGUAL RETAINER** STAINLESS STEEL OR WHITE GOLD



PATENTED

A NEW GENERATION IN FIXED RETENTION

- Secure and stable long term passive retention
- Patented interlocking chain design
- Adapts to lingual anatomy
 - No bending or burnishing
- No models or impressions
- Flexes interproximally
 - Resists breakage and bond failures
- No reciprocal forces – allows for minor biological movement – will not take an active bend
- Stainless steel offers increased tensile and torsional strength
- Different material choices
- Low profile – patient comfort

CLINICAL APPLICATIONS

- 3 to 3 retention
- Periodontal splinting

ORTHO FLEXTECH®

30" SS Spool	#SSOFT
30" SS Spool Etched	#SSOFTE
30" Gold Spool (white gold)	#OFT2
30" Nickel-Free Gold	#NFOFT2
30" Gold Spool - Etched	#OFT

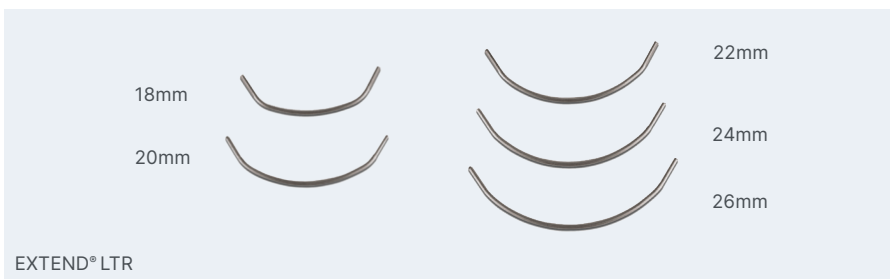


PATENTED

INSTRUCTIONAL VIDEO

Ortho Flex Tech
Available at RelianceU.tech

EXTEND® LTR RETENTION WITH TWO BOND POINTS



EXTEND® LTR

3 TO 3 LINGUAL RETENTION

- Titanium molybdenum wire
- Low profile .027 TMA wire
- Can be bonded to all 6 anteriors or to cuspids only
- Flattened and serrated cuspid pads
- Preformed with cuspid offsets
- Hygiene friendly
- Nickel free

EXTEND® LTR

INDIVIDUAL SIZES - 5 PER PACKAGE

LTR 18mm	#EX18
LTR 20mm	#EX20
LTR 22mm	#EX22
LTR 24mm	#EX24
LTR 26mm	#EX26
Measure Device (1)	#EXMD
Extend® LTR Starter Kit	#EXK

* Extend® LTR kit includes

- (5) 18mm wire
- (5) 20mm wire
- (5) 22mm wire
- (5) 24mm wire
- (5) 26mm wire
- (25) Arch Measuring Devices

RETAINIUM® XL
OPTIMUM STRENGTH BETA TITANIUM RETAINER WIRE

RETAINIUM® XL

Retainium® XL – (10) 6" Wires

#XLRET



FIXED RETENTION WITH TITANIUM MOLYBDENUM

- Flat .027" x .016" ribbon arch
- Low profile – comfortable and functional
- Increased strength
- MRI compatible
- Easy adaptation
- Nickel free titanium construction

CLINICAL APPLICATIONS

- Fixed lingual retention
- Diastema maintenance
- Space maintenance
- Splinting

RETAINIUM®
ORIGINAL TM ALLOY
RETAINER WIRE

BOND-A-BRAID®
LINGUAL RETAINER WIRE



LINGUAL TITANIUM MOLYBDENUM RETENTION

- Low profile
- .027" x .011" ribbon arch
- Adaptable
- Flexes Interproximally
- Nickel free
- MRI compatible

CLOSE AND ACCURATE ANATOMICAL ADAPTATION

- The dead soft wire easily adapts and is excellent for semi-permanent orthodontic splinting of the upper and lower incisors, diastema maintenance and other tooth splinting
 - Lingual retainer
 - .027" x .011" ribbon arch wire
 - 8-strand braided wire
 - Dead soft – adapts easily

CLINICAL APPLICATIONS

- Fixed lingual retention

RETAINIUM®

Retainium – (10) 6" Wires

#RET

BOND-A-BRAID®

Bond-a-Braid® 10 (6") Wires

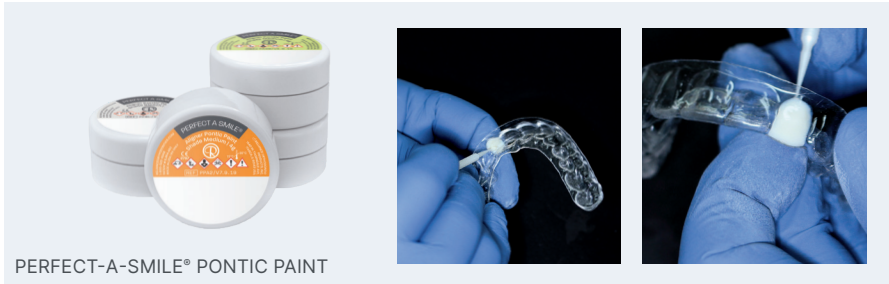
#BAB2

INSTRUCTIONAL VIDEO

Maxillary Retention Using Retainium
Available at RelianceU.tech

Restorative Solutions

PERFECT-A-SMILE® PONTIC PAINT IMMEDIATE RESTORATIONS AND SPACE MAINTENANCE



PERFECT-A-SMILE® PONTIC PAINT

QUICK AND ECONOMICAL AESTHETIC SOLUTION

- Light cure paste in 10 shades
- Applies smoothly to clear aligner sockets
- Translucent to match enamel
- High elasticity modulus
- Will not crack or splinter
- Bonds to any clear aligner
- Quick and economical
- Same day fix
- No doctor chairtime
- No lab fees or delays
- Complete in-office system
- Easy temporary bridge
- Approximately 100 complete pontics per jar

CLINICAL APPLICATIONS

- Eliminates flippers
- Temporary restorations
 - Congenital, trauma
 - Pre-pontic, peg laterals
 - Grafting, implants
- Space maintenance
- Aesthetic restorations
 - Single tooth
 - Partial arch

PERFECT-A-SMILE® PONTIC PAINT

Most Popular Shades A2, B1, D3 and C4

4g Jar PP/Bleach	#PPBL
4g Jar PP/A1 Shade	#PPA1
4g Jar PP/A2 Shade	#PPA2
4g Jar PP/A3.5 Shade	#PPA35
4g Jar PP/B1 Shade	#PPB1
4g Jar PP/C1 Shade	#PPC1
4g Jar PP/C4 Shade	#PPC4
4g Jar PP/D3 Shade	#PPD3
4g Jar PP/Light Shade	#PASP
4g Jar PP/Medium Shade	#PASM
Super Fine Micro Brushes (100)	#MBSF



PERFECT-A-SMILE® PONTIC PUTTY LIGHT CURE FORMABLE PASTE



PERFECT-A-SMILE® PONTIC PUTTY

FINGERTIP PONTIC FABRICATION

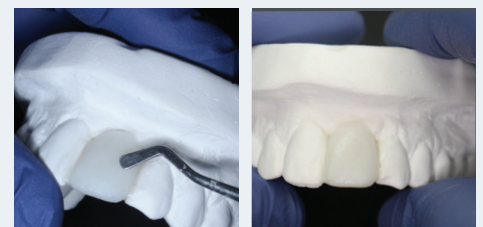
- Light cure composite paste
- Putty-like consistency
- Facilitates tooth shape formation
- Eliminates pontics, wax & PVS
- Bonds tenaciously to stone/resin models
- Provides proper clear aligner anatomy

CLINICAL APPLICATIONS

- Pontic formation by hand
- Bridges/fills gaps in model
- Facilitates proper aligner formation

PERFECT-A-SMILE® PONTIC PUTTY

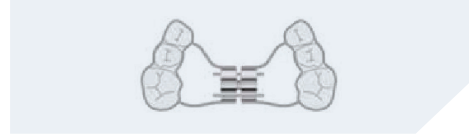
5g Paste In Syringe #LBOPS



INSTRUCTIONAL VIDEO

Creating Pontic Teeth with Perfect A Smile
Available at RelianceU.tech

Acrylic Appliance Bonding



ACRYLIC APPLIANCE PRE-DELIVERY PREP

 **BLUE GEL ETCH**
SYRINGE APPLICATOR WITH TIPS



BLUE GEL ETCH

- Controlled application around buccolingual circumference
- Order #BEGS
- * Full description on page 18

 **ASSURE® PLUS**
BONDING PRIMER AND ENHANCER



ASSURE® PLUS

- The only primer that bonds to deciduous enamel
- Order #PLUS
- * Full description on page 3

 **PLASTIC CONDITIONER**
ACRYLIC PREP



PLASTIC CONDITIONER

- Initiates bond between appliance and adhesive
- 10g bottle
- Order #PL

ACRYLIC APPLIANCE CEMENTS

 **BAND-LOK® DUAL CURE**
SELF MIX SYRINGE



BAND-LOK® DUAL CURE

- Order #SMBL - Natural
- Order #SMBLB - Blue
- * Full description on page 15

 **EXCEL®**
CHEMICAL CURE



EXCEL®

- Order #1ERSAF & 1ERSB
- * Full description on page 8

Reliamold

MOLDS MAY BE DELIVERED WITH BONDER HANDLE (#BHA) OR ANY HEMOSTAT.



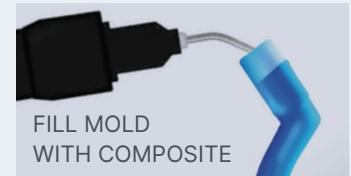
Mold Composite Auxiliaries Directly on Teeth

EASY, EFFECTIVE & ECONOMICAL

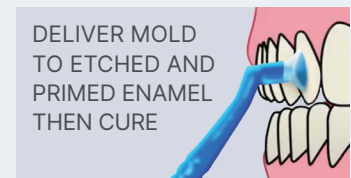
- Molds are translucent and flexible to facilitate composite loading, curing, and disengagement.
- A mold is filled with a light cure composite (Go To®, T.K.O.®, or Flowtain™ recommended) then delivered to the tooth and cured.
- The desired auxiliary is delivered, formed, and functional immediately.
- Value priced to be single-use disposable.



EASY-TO-USE
PRECISION MOLDS



FILL MOLD
WITH COMPOSITE



DELIVER MOLD
TO ETCHED AND
PRIMED ENAMEL
THEN CURE

DIFFERENT MOLDS FOR DIFFERENT APPLICATIONS

ONLY FROM  RELIANCE®



HABIT CONTROL

Inhibits thumbsucking and tongue thrust tendencies.

Habit control #RMH



CUSPID RAMP

Bite opening ramp applied to the cuspid—5.0 mm.

Cuspid ramp #RMC



BUTTON

Low profile and smooth. Facilitates elastomeric or ligature engagement.

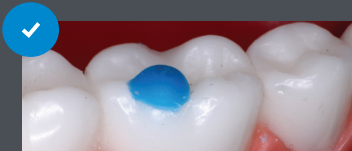
Button #RMBU



MOLAR TUBE

Molds a temporary tube. Accepts wire up to 020.

Molar Tube #RMT



MOLAR PAD

Open the bite with posterior occlusal buildups. T.K.O.® or Ultra Band-Lok® recommended.

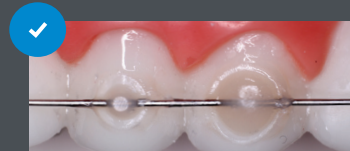
Molar Pad #RMMP



BITE RAMP

Bite opening turbo formed on the lingual of upper incisors. 2 sizes—3.0 mm or 5.0 mm.

Bite ramp 3mm #RMBR3
Bite ramp 5mm #RMBR5



WIRE HOLDER

Bonds lingual retainers or other wires consistently with a smooth and low profile finish. 2 sizes—3.0 mm or 4.5 mm.

Wire bonder large #RMWBL
Wire bonder small #RMWBS

MOLD KIT

(2) Bonder Handles
(108) Molds; 12 Per Type

Mold Kit #RMK

INDIVIDUAL MOLDS

(25) Molds Per Package

Bonder Handle Sold Separately
#BHA

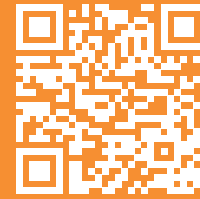
TNT Archwires



TNT®
TRIED N' TRUE

ARCHWIRES

STAINLESS STEEL / NICKEL TITANIUM
TITANIUM MOLYBDENUM



INDIVIDUAL ORDER
NUMBERS CAN BE FOUND AT
RELIANCEORTHODONTICS.COM

✓ **NITI & SS Stainless Steel 25/PKG**
TM Beta Titanium 10/Pkg

✓ = AVAILABLE IN ALL TNT® ARCHFORMS

ALLOYS	NICKEL TITANIUM		TM BETA TITANIUM	SS STAINLESS STEEL
	HEATERS THERMAL NITI	SE SUPERELASTIC NITI		
.012	✓	✓	-	✓
.013	✓	✓	-	-
.014	✓	✓	-	✓
.016	✓	✓	-	✓
.018	✓	✓	-	✓
.020	✓	✓	-	✓
.014 x .025	✓	✓	-	-
.016 x .016	✓	✓	-	✓
.016 x .022	✓	✓	✓	✓
.016 x .025	✓	✓	-	✓
.017 x .025	✓	✓	✓	✓
.018 x .018	✓	✓	-	✓
.018 x .025	✓	✓	✓	✓
.019 x .025	✓	✓	✓	✓
.020 x .020	✓	✓	-	✓
.021 x .025	✓	✓	✓	✓

✓ **Specialty NITI Archwires**



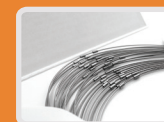
10/PKG

TNT® REVERSE CURVE NITI

R-FORM UP & LOW D-FORM UP

(Available only in SE NITI sizes)

.014	.014 x .025	.016 x .016
.016	.016 x .022	.016 x .025
.018	.017 x .025	.019 x .025
.020	.021 x .025	

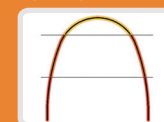


25/PKG

TNT® PRESTOPPED

HEATERS, SE OR SS ALL TNT ARCHFORMS

(Not available in .021 x .025 wires)

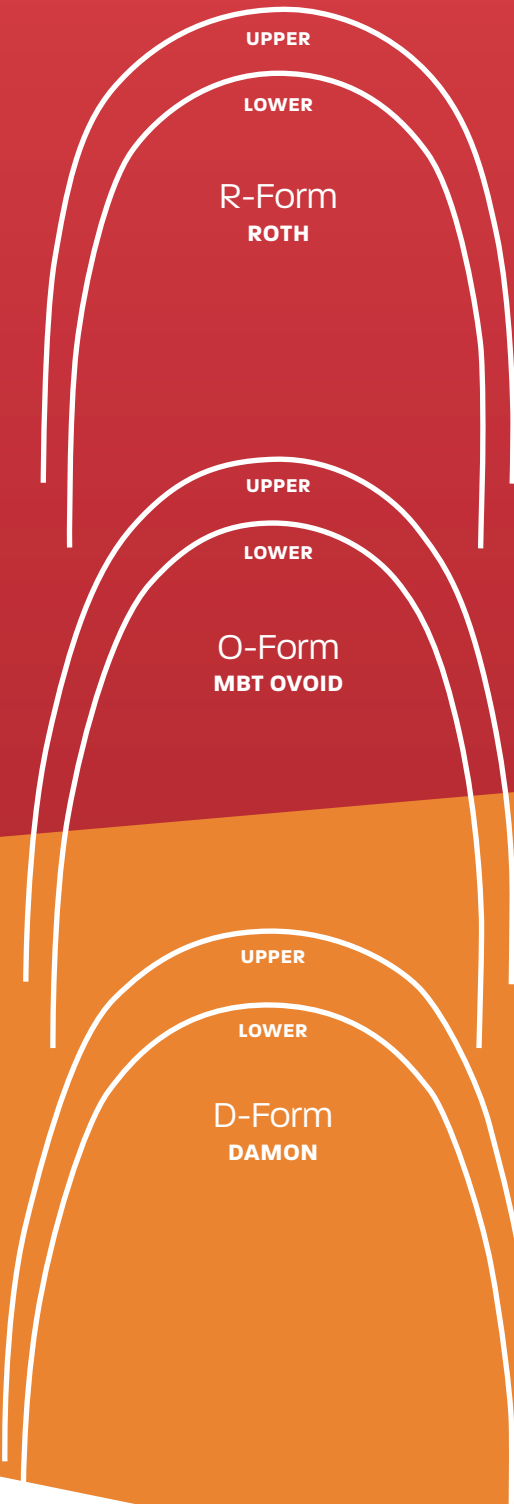


10/PKG

TNT® PROGRESSIVE FORCE NITI

R-FORM UP & LOW

(Available in all dimensions)



Relastics



✓
**NOW
AVAILABLE
IN NON-
LATEX**

A New Standard of Consistency in Intraoral Forces

Reliance, the name you trust in bonding, has researched materials and manufacturing processes to develop a precision line of patient elastics.



Relastics Only From Reliance

- 5 sizes and 4 forces provide the treatment choices for any applied mechanics
- Precision manufacturing techniques and in-process testing ensure force accuracy
- Patient pack ID marks are familiar and concise
 - Letters designate size
 - Colors designate force
- 3-year shelf life





Resealable & Tamper Proof

Also Available in Latex-Free

Letter Designates Size

Color Designates Force

Light Resistant Plastic

Letter & Color IDs



Relastics® Size Guide

50 Packs of 100 Elastics Per Pouch

Force Values & Order Numbers

Actual Size	Dimensional Size	Size ID	Light 2.5 oz Red	Medium 3.5 oz Green	Heavy 4.5 oz Blue	X Heavy 6.5 oz Black
○	1/8" 3.2mm	A	Red A #EL18L	Green A #EL18M	Blue A #EL18H	Black A #EL18X
○	3/16" 4.8 mm	B	Red B #EL36L	Green B #EL36M	Blue B #EL36H #NLEL36H*	Black B #EL36X
○	1/4" 6.4 mm	C	Red C #EL14L	Green C #EL14M	Blue C #EL14H #NLEL14H*	Black C #EL14X
○	5/16" 7.9 mm	D	Red D #EL56L	Green D #EL56M	Blue D #EL56H #NLEL56H*	Black D #EL56X
○	3/8" 9.5 mm	E	Red E #EL38L	Green E #EL38M	Blue E #EL38H	Black E #EL38X

*Non-Latex Option

Custom Base Indirect Bonding

MODEL ADHESIVES



THERMA-CURE™



GO TO®

- Tacky paste viscosity
- Unlimited working time
- Heat curable
- Highly filled composite

- Viscous to resist drift on resin and stone models
- Extended working time to allow bracket manipulation
- Single-piece flash clean-up

THERMA-CURE™

5g Therma-Cure™ Syringe #TC

GO TO®

4g Paste Syringe #GTP

4g Paste In Tips (10 Tips) #GTT

TRANSFER ADHESIVES



FLOWTAIN™



MAXIMUM CURE® SEALANT

- Needle tip dispenser
 - Using the tips provided, these materials are easily injected onto custom pads
- Low modulus of elasticity to resist breakage
- Highly filled to bridge gaps between custom pads and tooth surface

- 90-Second working time
- Excellent molecular conversion rate
- Self-curing
- Product must be refrigerated nightly

FLOWTAIN™

1.5g Flowtain™ with Tips #FT

19 gauge Tips (10) #19TIPS10

MAXIMUM CURE® SEALANT

7g Maximum Cure® Sealant A with Fluoride #MC7AF

7g Maximum Cure® Sealant B #MC7B

20g Maximum Cure® Sealant A with Fluoride #MC20AF

20g Maximum Cure® Sealant B #MC20B

Clean Base IDB Adhesives

#1 OPTION FOR DIGITALLY GUIDED PROCESS

L.C.R.™
HYBRID FLOWABLE IDB ADHESIVE



L.C.R.™	
5g L.C.R.™ Paste in Push Syringe	#LCR
1.5g L.C.R.™ Paste in Push Syringe w/ Tips	#LCR15
5g L.C.R.™ Paste in Tips (11)	##LCRT5

L.C.R.™

- Hybrid flowable consistency allows for instant bracket mesh penetration
- Resin matrix holding capacity allows for pre-loading up to 7 days in advance
- Micro+ nano fill for flowable consistency with durability of highly filled composite
- Fluoresces for easy removal

GO TO®
LIGHT CURE BRACKET ADHESIVE



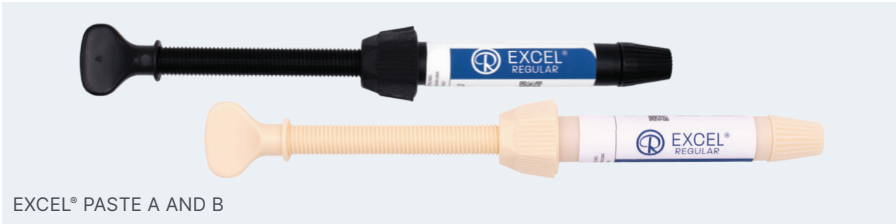
GO TO®	
4g Paste Syringe	#GTP
4g Paste In Tips (10 Tips)	#GTT

GO TO®

- Perfect viscosity to allow bracket mesh penetration in jigs
- Highly filled to provide ultimate strength
- Pre-loadable – allowing even shorter chair time prep
- Fluoresces for easy removal

- GoTo® CC coming soon!

EXCEL®
CHEMICAL CURE SPECIALTY ADHESIVE



EXCEL®	
Excel® Regular Paste A in 6g Screw Syringe with Fluoride	#1ERSAF
Excel® Regular Paste B in 6g Screw Syringe	#1ERSB
Excel® Regular Paste A in 12g Jar with Fluoride	#ERJAF
Excel® Regular Paste B in 12g Jar with Fluoride	#ERJB

EXCEL® PASTE A AND B

- Unsurpassed bond strength
- Thin, creamy consistency
- Facilitates clean base penetration
- Three minute working time
- Contains Fluoride

Accessories

DISPOSABLE BENDA BRUSHES



DISPOSABLE BENDA BRUSHES

DISPOSABLE BENDA BRUSHES

4" Benda Brushes (250)	#4BB250
------------------------	---------

- Sealant and enhancer applicators

NYLON MIXING SPATULAS



NYLON MIXING SPATULAS

NYLON MIXING SPATULAS

Spatulas (50)	#S
---------------	----

MICRO BRUSHES



MICRO BRUSHES

MICRO BRUSHES

Micro Brushes (100)	#MB
---------------------	-----

Super Fine Micro Brushes (100)	#MBSF
--------------------------------	-------

SPONGE PELLETS



SPONGE PELLETS

BRUSH HANDLE AND TIPS



BRUSH HANDLE AND TIPS

SPONGE PELLETS

Sponge Pellets (500)	#SP
----------------------	-----

BRUSH HANDLE AND TIPS

Brush Handle	#BHA
--------------	------

Brush Tips (250)	#BT250
------------------	--------

- Etchant applicators

 MIXING PADS



MIXING PADS

 MIXING WELL



MIXING WELL

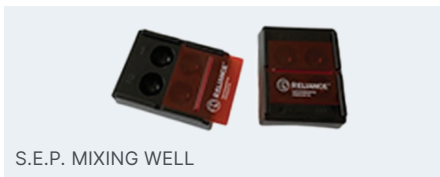
MIXING PADS

Disposable Mixing Pads (1) #1PADS

MIXING WELL

Mixing Well #1MXW

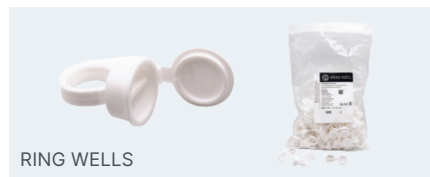
 S.E.P MIXING WELL



S.E.P. MIXING WELL

- Ambient light blocking

 RING WELLS



RING WELLS

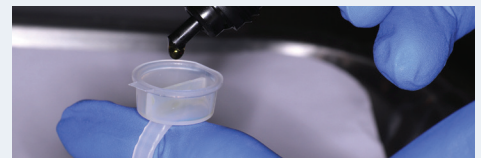
- Efficient finger mounted method to apply sealants and resins at chairside
- 2 separate reservoirs
- 100 rings per package

S.E.P. MIXING WELL

S.E.P. Mixing Well with Light Impervious Shield #1SEPW

RING WELLS

Ring Wells #RW



 UVEX EYEWEAR



UVEX ULTRA SPEC® 2000

- Fits over prescription eyeglasses

UVEX EYEWEAR

Uvex Ultra Spec® 2000 #SGU

 SKYPER® EYEWEAR



UVEX SKYPER®

- Low profile

UVEX SKYPER®

UVEX Skyper® #SG

Accessories

MARK II CR SYRINGE

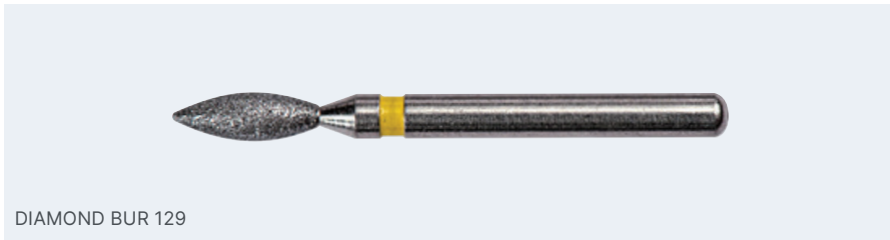


MARK II CR SYRINGE

MARK II CR SYRINGE	
Mark II CR Syringe	#CRII

- Used with pre-loaded adhesive tips

DIAMOND BUR 129

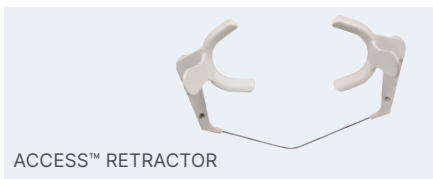


DIAMOND BUR 129

DIAMOND BUR 129	
Diamond Bur 129	#DB

- Prep bur
- Roughens surface
- * Other burs appear on page 23

ACCESS™ RETRACTOR



ACCESS™ RETRACTOR

- Sterilize with dry heat or autoclave

TECHNIQUE CARDS

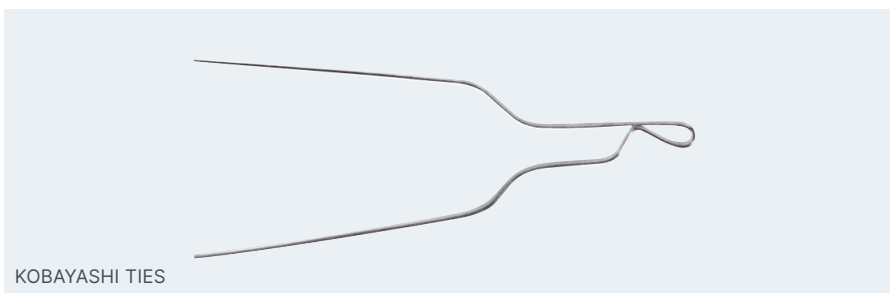


TECHNIQUE CARDS

- Chairside reference for all bonding scenarios
- This item is non-returnable

ACCESS™ RETRACTOR	
Access™ Adult Cheek Retractor	#CH1
Access™ Pedo Cheek Retractor	#CH2
TECHNIQUE CARDS	
Chairside Bonding Technique Cards	#TECH

KOBAYASHI TIES



KOBAYASHI TIES

KOBAYASHI TIES	
Tie Hooks - .010 100/Pkg	#K10
Tie Hooks - .012 100/Pkg	#K12
Tie Hooks - .014 100/Pkg	#K14
Pre-Twisted - .010 100/Pkg	#SK10
Pre-Twisted - .012 100/Pkg	#SK12
Pre-Twisted - .014 100/Pkg	#SK14

Terms & Conditions

ORDERING

To order Reliance Orthodontic Products, simply contact our home office Toll-Free (in U.S.) at 1-800-323-4348 or 1-630-773-4009. You may also order through our secure website at www.RelianceOrthodontics.com.

SHIPPING

All prices are F.O.B. Itasca. All shipping is billed with the order. Please call for more information.

EXPORT

Export orders must be paid for in advance by proforma invoice.

TERMS

Net 30 days upon approval. Sales tax added where applicable. All payments are due in U.S. funds.

EXCHANGES OR REFUNDS

Your satisfaction is Guaranteed! Reliance Orthodontic Products, Inc. guarantees that our products are of the highest quality and workmanship. If at any time prior to its expiration date your adhesive system fails to perform in a manner not consistent with the product, we will replace the remaining product with new material free of charge or issue a credit for the remaining product. Please check your order for accuracy. Any discrepancies must be reported to Reliance within 7 days. No refunds, credits, or replacement will be issued after 30 days unless the product is deemed defective by Reliance Orthodontic Products, Inc. Products that are being returned to Reliance Orthodontic Products, Inc. must have a prior Return Authorization Number (RMA). All products being returned for credit or replacement must be sent postage paid with a copy of your invoice and your RMA number clearly visible on the package, or the package will be refused by Reliance Orthodontic Products, Inc. A restocking fee may be applicable.

CONTACT

1540 West Thorndale Ave., PO Box 678,
Itasca, IL 60143 USA

1-800-323-4348
Phone 1-630-773-4009
Fax 1-630-250-7704

Please email any questions or comments to
info@relianceorthodontics.com



RELIANCEORTHODONTICS.COM

© 2024 Reliance Orthodontic Products

US FDA
REGISTERED

HEALTH CANADA
REGISTERED

Certificates Available Upon Request

www.RelianceOrthodontics.com



V13.04.24



MADE IN THE U.S.A.