



**LNG Dental**

**Orthodontic Catalogue**



# CONTENTS

Brackets & Accessories	3
Miscellaneous	7
Adhesives	8
Finishing and Polishing	17
Lingual Retention	18
Wires and Accessories	19
Elastomers and Accessories	23
Proximal Tool System	25
Lab Supplies	26
Instruments	31
Infection Control	32



# Brackets



The LEGEND™ collection is a traditional twin, metal bracket system available in a medium and mini size. LEGEND medium is manufactured by a Metal Injection Molding (MIM) and Computer Numerical Controlled (CNC) precision milling process for a consistent and precise bracket that features a 100% accurate slot and anatomically correct bonding pads for maximum bond retention.

**R60**  
per Bracket

**R1 200**  
per Kit

**Bulk**  
**10+ R960**

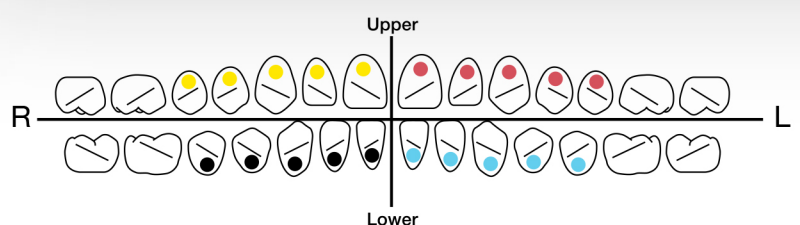


## Design Features

- Made from aerospace strength steel
- Tumbled for a highly polished and better looking bracket
- Rhodium coated for better aesthetic
- Laser-fused hook options designed for malleability and strength
- Anatomically correct bonding pad for each tooth
- In/Outs compatible between medium & mini

# LEGEND mini/medium Metal

Standard Metal Bracket



# Brackets

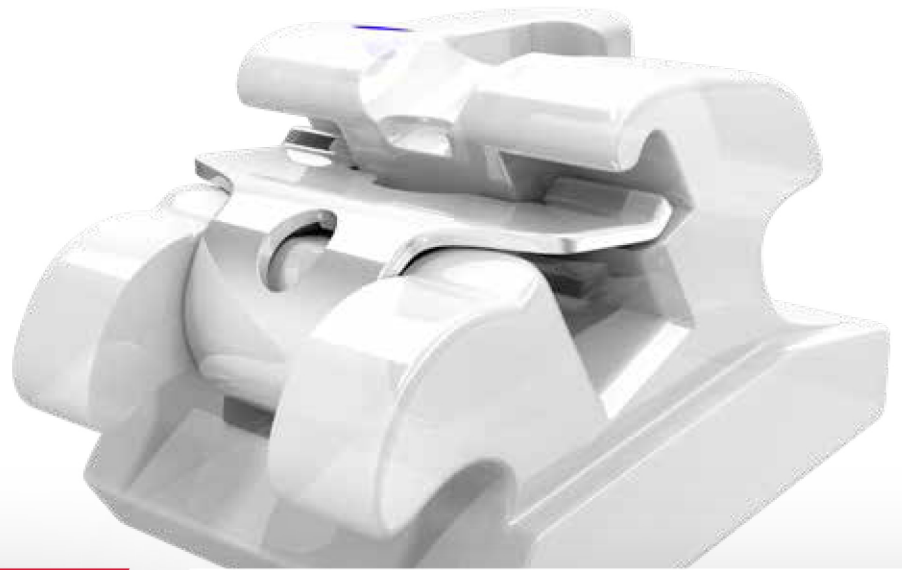


The EXPERIENCE™ collection of self-ligating orthodontic brackets offer doctors and patients a variety of options for their orthodontic treatment needs. EXPERIENCE™ brackets minimize friction during initial leveling and aligning and allow for increased torque and rotation control during finishing.

After the metal or ceramic injection process (MIM or CIM), there is a cooling down phase in which the mold retracts. TOMY then incorporates an extra step to make the archwire slot consistently precise, using Computer Numerical Controlled (CNC) milling to ensure that every slot in the EXPERIENCE™ collection is exactly .018" or .022". All TOMY archwire slots will then express the exact torque and angulation built into each bracket providing a more predictable result.

**R300**  
per Bracket

**R6 000**  
5 + Kits.  
Per Kit R5 100



## Self Ligation Features

- Increased patient comfort
- Reduced chair time
- Fewer office visits necessary
- Shortened treatment time
- Improved patient hygiene
- Pleasing aesthetics

**SL** Product

**Hi** Aesthetic

# EXPERIENCE™

## ceramic

### Self-Ligating ceramic treatments



Passive



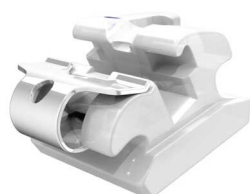
Interactive



Active



## Self Ligating



### Experience Ceramic

Discreet when in the mouth, its excellent bond strength and its mechanical properties made it the reference in aesthetic appliances. Its clip is rhodium-coated and melts into the look of the ceramic body of the bracket. First order information is compatible with Experience metal brackets. When both bracket types are present on the same arch, your appliance remains consistent.

**Normal**  
R300  
Kit - R6 000  
Bulk (5+1)  
Kit - R5 100



### Experience Metal

Interactive brackets became the worldwide best-selling self-ligating systems. Low friction and control are the most sought-after parameters in orthodontic appliances.

Experience metal gives you more:

- accuracy of the information the practitioner selected
- perfectly adapted anatomical bases (micro sandblasted), limiting bond failures

**Normal**  
R128  
Kit - R2 560  
  
**Bulk (10)**  
R102  
Kit - R2 176



### Experience Lingual

Experience L is THE lingual interactive orthodontic bracket. Its easy access golden clip makes archwire changes more practitioner-accessible and shortens treatment time to the greatest satisfaction of patients. Its small size limits speech problems and bond failures.

**Normal**  
R280  
Kit - R5 600  
  
**Bulk (5+)**  
R224  
Kit - R4 760

## Traditional



### Chic

- Distal-gingival color ID
- Long axis scribe line for easier bracket orientation
- Torque in base
- Large undercuts for easy ligation
- Molded mechanical base for greater bracket retention and more predictable bracket removal

**Normal**  
R122  
Kit - R2 440  
  
**Bulk (5+)**  
R98  
Kit - R2 074



### Legend Mini

**R60**  
Each



### Single Access Tube

**R35**  
Each

# Brackets & Accessories



## Buttons

Y/A101-01

R120  
10 Pieces



## Bondable Eyelet

Y/A101-11

R120  
10 Pieces



## Crimpable Hooks

Y/A102-013 (Short) Y/A102-011 (Long)

R150  
10 Pieces



## Niti Closed Coil Spring

3mm - Y/CSO1003. 6mm - Y/CSO1006. 9mm - Y/CSO1009. 12mm - Y/CSO1012

R120  
10 Pieces



## Tongue Tamers

Y/A103-01

R95  
Per 10



## LUXE Series Bondable Buccal Tubes

Roth/MBT/Edgewise .018 and 0.22.

R220  
Per 10

Buy 50 Tubes per quadrant at R18<sup>70</sup> per tube



## MIM - B Mini Series Metal Brackets

Roth/MBT .018 and .022.

Buy 50 Kits + 15 FREE

R190  
Per Kit



## Wires

Wires	Round Per 10	Rectangular Per 10
Niti	R50	R68
Heat Activated	R65	R85
Niti Reverse Curve	R110	R180
Beta Titanium	R330	R450
Stainless Steel	R40	R48



# Miscellaneous



**Elastic Placers**

**R120  
per 100**

Y/HK01M



**Patient Wax (Assorted)**

**R350  
per 50**

Y/HK06



**Elastic Organiser  
(Powerchain)**

**R360  
15 Chains**

Y/YK17



**Micro Applicators**

(available in extra fine, fine, medium, large & extra large)

**R120  
per 4 tubes**



**Elastic Organiser  
(Sani-ties)**

**R550  
150 Sani-ties**

Y/YK16



**Patient Care Kits**

**R480  
per 10**



**Elastic Organiser  
(Sani-ties and PC)**

**R680  
240 Sani-ties  
and 12 PC's**

Y/YK15

# New Product



RELIANCE ORTHODONTICS INTRODUCES

## TKO Composite Paste Light Cure Multi-Purpose Composite

TKO is a versatile composite with strength and a low modulus of elasticity. TKO composite paste is effective in both laboratory and chairside applications.



### Proprietary Working Properties for Specific Applications

#### CURES STRONG AND SMOOTH WITH MODEST PLIABILITY

- Resists Opposing enamel wear
- Soft cure resin matrix for patient comfort

#### VISCOSITY PERFECTED FOR VARIED APPLICATIONS

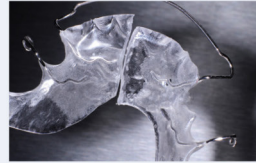
- Controlled needle tip dispensing
- Flexes and recovers with acrylic appliances

#### PINK SHADE

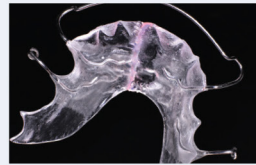
- Aids in placement, removal and clean up
- Matches acrylic appliances



✓ TKO INSTRUCTIONAL VIDEO  
AVAILABLE AT [RELIANCEU.TECH](https://relianceu.tech)



ACRYLIC  
APPLIANCE  
REPAIRS



OCCUSAL  
BUILD-UPS



BITE  
OPENING  
RAMPS



LABORATORY  
BLOCK OUT  
APPLICATIONS







**R1 850**  
2 X 2.9 g  
Syringes



**Orthotown's Townie Choice Award Winner**  
...and the award goes to

**ASSURE® PLUS**

**10 Years in a row**

**Assure® Universal Bonding Resin:**

Can be used under any chemical, light or dual cure adhesive, regardless of manufacturer. Wet or dry conditions.

**Will condition 1500 to 1700 teeth!**



**R3 675**  
6ml

# Adhesives



## GC Ortho Connect

### One Step System

No need to apply primer or adhesive on the tooth, as it is already incorporated into the paste.

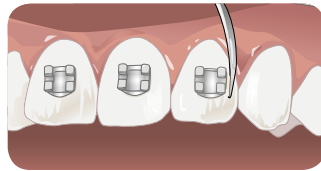
A simple etching of the enamel followed by drying is enough to prepare the bracket or buccal tube for bonding.

90-1100-000

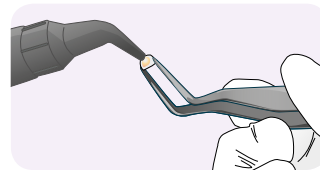
R1 850  
2 x 2.9 g  
Syringes



When using GC Ortho Connect, no primer is necessary, since it is already incorporated into the adhesive, thus creating a simplified bonding process that reduces costs.



The adhesive's ideal viscosity insures reliable and precise bracket placement.



An ergonomic syringe guarantees accurate dosage, providing a practical and economic adhesive solution. The syringe's cap prevents dry out and thus decreasing potential waste.



Excess adhesive is detected by a black light, which aids in fast and efficient cleanup.



## GC Revotek LC

Single-component temporary C&B material delivered as a stick no mixing or pre-impresion simple to use. (Cut, shape and cure).

LNG/Revotek

R1 450



# Adhesives



## Mammoth Etch

SO/114-045

R1 560  
50ml syringe



## Light Band Cement Blue

SO/114-021

R725  
5g syringe



## Light Cure Retainer

SO/114-031

R445  
2 x 2 g syringes



## Light Bond Syringe

SO/114-012

R930  
5g syringe



## Sure Ortho Light Bond Primer

SO/114-011

R990  
5 ml

# Adhesives



## Light Cure Retainer

REL/LCR

R1 075  
5g syringe



## Flow Tain and Flow Tain LV

- Flow Tain and Flow Tain LV are light cure composites.
  - These materials are very smooth when cured which will reduce wear and enhance patient comfort
  - 7 gm Bonding Resin Part A With Fluoride
  - 7 gm Bonding Resin Part B
- REL/FT. REL/FTLV

R825  
1.5g syringe



## Ultra Band Lok Blue Syringe

REL/UBLBPP

R920  
5g syringe



## Light Bond

Light Bond blue paste comes in a 5 gram push syringe with Fluoride.  
REL/LBPPF

R950  
5g syringe



## Bond Aligner

- Bonds Attachments To Clear Aligners
- Secure aesthetic bonds
  - Bond to any clear aligner material
  - No primers or conditioners
  - Clear light cure paste
  - High modulus of elasticity
    - Conforms to aligner distortions
    - Secure bonds throughout
  - Bond ceramic, metal or plastic attachments
- REL/BA

R1 730  
1.4g syringe



## ReliaWax

ReliaWax is a reliable and revolutionary wax-like protection in a syringe that provides enduring comfort for your patients.  
REL/RWX

R460  
1.5g syringe



# Adhesives

**R2 595**  
Individual Molds

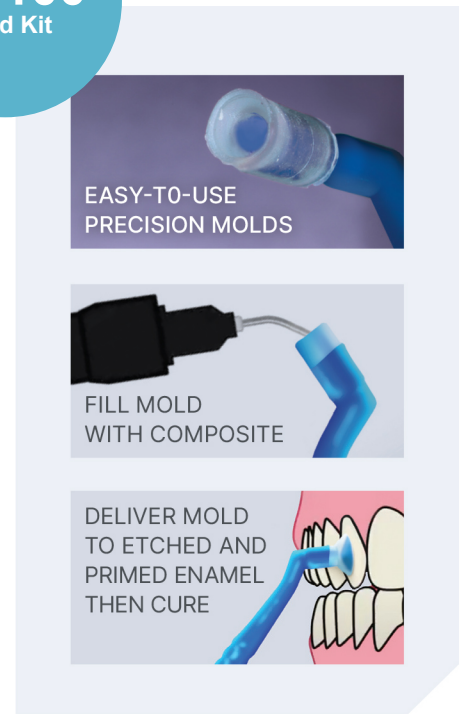
**R6 100**  
Mold Kit



## Mold Composite Auxiliaries Directly on Teeth

### EASY, EFFECTIVE & ECONOMICAL

- Molds are translucent and flexible to facilitate composite loading, curing, and disengagement.
- A mold is filled with a light cure composite (Go To, TKO, or Flowtain recommended) then delivered to the tooth and cured.
- The desired auxiliary is delivered, formed, and functional immediately.
- Value priced to be single-use disposable.



MOLDS MAY BE DELIVERED WITH BONDER HANDLE (#BHA) OR ANY HEMOSTAT.

### DIFFERENT MOLDS FOR DIFFERENT APPLICATIONS

ONLY FROM **RELIANCE**®



#### HABIT CONTROL

Inhibits thumbsucking and tongue thrust tendencies.

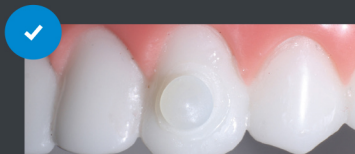
Habit control #RMH



#### CUSPID RAMP

Bite opening ramp applied to the cuspid—5.0 mm.

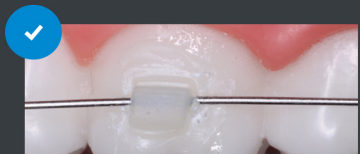
Cuspid ramp #RMC



#### BUTTON

Low profile and smooth. Facilitates elastomeric or ligature engagement.

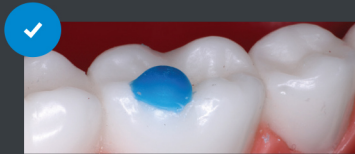
Button #RMBU



#### MOLAR TUBE

Molds a temporary tube. Accepts wire up to 020.

Molar Tube #RMT



#### MOLAR PAD

Open the bite with posterior occlusal buildups. TKO or Ultra Band Lok recommended.

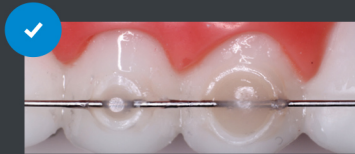
Molar Pad #RMMP



#### BITE RAMP

Bite opening turbo formed on the lingual of upper incisors. 2 sizes—3.0 mm or 5.0 mm.

Bite ramp 3mm #RMBR3  
Bite ramp 5mm #RMBR5



#### WIRE HOLDER

Bonds lingual retainers or other wires consistently with a smooth and low profile finish. 2 sizes—3.0 mm or 4.5 mm.

Wire bonder large #RMWBL  
Wire bonder small #RMWBS

**MOLD KIT**  
(2) Bonder Handles  
(108) Molds; 12 Per Type  
Mold Kit #RMK

**INDIVIDUAL MOLDS**  
(25) Molds Per Package  
Bonder Handle Sold Separately #BHA

RELIAMOLD INSTRUCTIONAL VIDEO AVAILABLE AT [RELIANCEU.TECH](https://relianceu.tech)



## Assure Plus Bonding Resin

All Surface Light Cure Bonding Primer And Enhancer.  
The Most Versatile Resin Ever Developed.

- Enhances bond strength on all surfaces
- Tolerates moisture contamination
- Primes and conditions any tooth surface for bonding
- Effective on any enamel type
- Effective on any artificial substrate
- Eliminates hydrofluoric acid with porcelain crowns

REL/PLUS

**R3 675**  
6ml



## Assure Bonding Resin

The Original Universal Bonding Resin.

- Bonding primer and enhancer
- Typical or atypical enamel
- Metal and composite restorations

REL/AS

**R3 040**  
6ml



## GoTo Light Cure Bracket Adhesive

- Proven bond strength and consistency
- Unique viscosity easily penetrates bracket pads
- No bracket drift – stays in place until cured
- New proprietary microfiller construction
- One piece flash removal – “ropes” off bracket periphery
- Translucent finish matches any tooth shade
- Maximum bond strength
- Easy removal and cleanup
- UV disclosing agent – fluoresces on tooth

REL/GTP

**R900**  
4g syringe



## Phase II

Mix Paste Bracket Adhesive – Chemical Cure.

- Microfilled paste
    - Unrivaled strength
    - Smooth, tacky viscosity
    - No bracket drift
  - Self curing
    - Full polymerization
    - A&B mix system
    - 2 minute working time
  - Easy removal and cleanup
  - Contains fluoride
- Paste A - REL/1PSAF. Paste B - REL/1PSB

**R530**  
6g syringe



## Excel

Chemical Cure Specialty Adhesive.

- Unsurpassed bond strength
  - Thin, creamy consistency
  - Extended working time
  - Contains fluoride
- Paste A - REL/1ERSAF. Paste B - REL/1ERSB

**R675**  
6g syringe



## Rely•a•Bond

No Mix Bracket Adhesive.

- 1 Step/Contact Adhesive
- Contact cure - primer to paste
  - Chemical cure – no light required
  - Saves time and material
    - No mixing
    - Minimizes adhesive per bond
  - Highly filled paste
    - Increased bond strength
    - Tacky viscosity
    - Prevents bracket drift
  - Contains fluoride

REL/1RPP

**R510**  
3.5g syringe



## Rely•a•Bond Kits

All Rely•a•Bond® kits include:

- 14g Paste
  - 16g Primer
  - 9g Etchant
  - Spatulas, Brushes & Mixing Pads
- REL/RPF

**R4 385**  
per kit





## Blue Gel Etchant

- Controlled and even application
- 37% phosphoric acid
- Excellent for lingual retention or large acrylic appliances
- Contains anti microbial B. A. C.

REL/BEGS

R440  
5g syringe



## Gel Etchant

- 37% phosphoric acid
- Controlled application

REL/EGSS

R405  
6.5g syringe



## Porcelain Conditioner

For Bonding to Ceramic Crowns

- Effective with: porcelain, zirconia and lithium disilicate

REL/PO

R795  
8ml



## Porcelain Etch

Porcelain Etching Agent with Barrier Gel.

REL/POE

R810  
9g gel



## Pro Seal

Enamel Protection From Start To Finish.

- Two year surface protection
- University tested in over 15 studies and clinically proven
- Sets without oxygen inhibited layer - smooth, hard finish
- Fluoresces under UV light
- Patented catalyst system

Original Pro Seal cures in 360 to 420 NM range.

REL/PRO

R2 785



## Light Bond Sealant

Light Cure Resin.

- Bonding primer and sealant
- Available with or without quartz filler

REL/LBS3F

R745  
3 ml

# Renew Finishing Burs



**Renew Bur 118S**  
REL/RSB

R270  
Each



**Renew Bur 218**  
REL/RSB2

R270  
Each



**Renew Bur 118L**  
REL/RSBL

R315  
Each



**Renew Bur 815**

- 18 fluted carbide
  - Quick removal of bulk composite
  - Gentle on enamel
  - Use with or without H2O
- REL/RSB815

R390  
Each

# Renew Finishing Points



**Straight Hand Piece**  
REL/RSPHP

R1 115  
Per 12



**Latch**  
REL/RSPL

R1 115  
Per 12



**Friction Grip**

- Polishes tooth surface
  - Black point discloses when composite is fully removed
  - Removes residual composite
  - Does not create heat
- REL/RSPFG

R1 115  
Per 12

# Finishing & Polishing



**First and Final Prophy Pumice**

- Pre-packaged - sterile cups for individual patient use.
- Pre-mixed - just open and apply with prophy cup
- No added chemicals - no flavoring, fluoride or oils
- Enamel polisher - 1st & Final can be used as the final polishing step with the Reliance Renew Finishing System

REL/FF

R910  
Per 200 cups



**Restore Polishing Paste**

Diamond Polishing Paste for restoration of glaze on artificial surfaces.  
REL/RESPP2

R1 485  
2 g syringe

# Lingual Retention



## Ortho FlexTech

Flexible Lingual Retainer.

- Secure and stable long term passive retention
- Patented interlocking chain design
- Adapts to lingual anatomy
  - No bending or burnishing
- No models or impressions
- Flexes interproximally
  - Resists breakage and bond failures
- No reciprocal forces – allows for minor biological movement – will not take an active bend
- Stainless steel offers increased tensile and torsional strength
- Different material choices
  - White Gold (original)
  - Nickel Free Gold
  - Nickel Free Gold – etched
  - Stainless Steel – increased strength
- Low profile – patient comfort

REL/SSOFT

R3 155  
30" chain



## RETAINIUM XL

Fixed Retention with Titanium Molybdenum.

- Flat .027" x .016" ribbon arch
- Low profile – comfortable and functional
- Increased strength
- MRI compatible
- Easy adaptation
- Nickel free titanium construction

REL/XLRET

R1 455  
Per 10



## Bond-a-Braid Lingual Retainer Wire

- Permanent retention is greatly enhanced using a flattened, dead soft braided wire.
- Intra-arch splinting with this thin ribbon arch prevents torque control problems that can occur using a round braided wire for these procedures

REL/BAB

R1 295  
Per 10



## Retainium Wire

Single strand NICKEL FREE titanium, flat metal ribbon with increased interproximal strength is ideal for semi permanent splinting and maintaining difficult extraction sites.

REL/RET

R1 445  
Per 10





## Lingual Retainers 1 - 1

- Bondable lingual retainer
- Available in small, medium and large

R35  
Each



## Lingual Retainers 3 - 3

- Bondable lingual retainer
- Light cure/Mesh bond. 30 - 39 mm or solid base

R45  
Each



## Palatal Arch Bar

- Specially tempered wire provides predictable tooth control
- Mesial loop/Distal loop
- Size: 35mm-55mm

R105  
Pack of 5



## Ligature Ties

- For quick tightening of ligatures with twist mate
- Sizes: .10"

67-0210-0010

R1 125  
Pack of 1000



## Kobayashi Hooks

- Time Saving k-hooks are easily tied in place without removing the archwire
- Our hooks are streamlined for easier and quicker tying of mini brackets

.012 - 67-0120-0012 } Pre-twist  
.014 - 67-0120-0014 }

.012 - 67-0220-0012 Non-twist

R215  
Per 100  
Pre-twist

R660  
Per 100  
Non-twist

# Wires & Accessories



## Preformed Ligature Wire

Foam sleeve colours:

.008 - Yellow	67-0110-0008
.009 - Green	67-0110-0009
.010 - Blue	67-0110-0010
.011 - Pink	67-0110-0011
.012 - Gray	67-0110-0012

**R575**  
Pack of 600



## Rotation Springs/Steiner Wedge

- Used for rotation
- Assembled on a .011" ligature
- Available in short/long

Short - 69-1510-0000  
Long - 69-1520-0000

**Short - R550**  
**Large - R600**  
Pack of 10



## Caplin Hooks

Lingual attachments aid in the seating and positioning of the band as well as accepting maxillary and mandibular appliances such as palatal bars and quad helix appliances

Curved - 42-0030-0000  
Flat - 42-0040-0000

**R275**  
per 10



## Ceramic Button Freddy

The Freddy ceramic button\* is the perfect clear utility button for all aesthetic appliances.

- Works lingual as well as labial
- The Oral surgeons use them whenever clear appliances are indicated
- Mesh structure of base makes a strong bonding
- Bonds well with most common adhesives
- Enough space around tie wing for all elastics
- Maintains the transparent look for aligners as anchorage for elastics

LNG44 - 1010-0001

**R1 785**  
per 10



## Crimpable Stops

LNG66 - 0120-0002

**R150**  
per 20

# Wires & Accessories



PRODUCT NO.	DIAMETER	GRADE	PRICE
229-000	0.012"	Regular	<b>R570</b>
230-100	0.014"	Regular	<b>R365</b>
231-300	0.016"	Regular	<b>R365</b>
232-400	0.018"	Regular	<b>R365</b>
233-500	0.020"	Regular	<b>R365</b>
234-600	0.022"	Regular	<b>R365</b>
235-700	0.024"	Regular	<b>R365</b>
229-010	0.012"	Regular Plus	<b>R650</b>
230-110	0.014"	Regular Plus	<b>R450</b>
231-310	0.016"	Regular Plus	<b>R450</b>
232-410	0.018"	Regular Plus	<b>R450</b>
233-510	0.020"	Regular Plus	<b>R450</b>
229-020	0.012"	Special	<b>R730</b>
230-120	0.014"	Special	<b>R530</b>
231-320	0.016"	Special	<b>R530</b>
232-420	0.018"	Special	<b>R530</b>
233-520	0.020"	Special	<b>R530</b>
229-030	0.012"	Special Plus	<b>R815</b>
230-130	0.014"	Special Plus	<b>R610</b>
231-330	0.016"	Special Plus	<b>R610</b>
232-430	0.018"	Special Plus	<b>R610</b>
233-530	0.020"	Special Plus	<b>R610</b>
234-630	0.022"	Special Plus	<b>R610</b>
235-730	0.024"	Special Plus	<b>R610</b>
229-040	0.012"	Premium	<b>R895</b>
230-140	0.014"	Premium	<b>R690</b>
231-340	0.016"	Premium	<b>R690</b>
232-440	0.018"	Premium	<b>R690</b>
233-540	0.020"	Premium	<b>R690</b>
228-050	0.010"	Premium Plus	<b>R980</b>
228-150	0.011"	Premium Plus	<b>R980</b>
229-050	0.012"	Premium Plus	<b>R980</b>
230-150	0.014"	Premium Plus	<b>R775</b>
231-350	0.016"	Premium Plus	<b>R775</b>
232-450	0.018"	Premium Plus	<b>R775</b>
226-060	0.008"	Supreme	<b>R1 060</b>
227-060	0.009"	Supreme	<b>R1 060</b>
228-060	0.010"	Supreme	<b>R1 060</b>
228-160	0.011"	Supreme	<b>R1 060</b>

## Hard Drawn Stainless Steel Wire Spools (25ft)





# Wires & Accessories



## Mini Curing Light

The mini curing light has a spectrum range of 450-490nm, high light intensity, autoclavable, a 1,000 hour 'solid state' LED bulb and a life time warranty. Requires AAAA batteries.  
OAR/800-510

R1 080  
Each



## Posterior & Anterior ARS Stripping Burs

Used for rapid enamel reduction.  
OAR/700-466

R655  
Per 5



## Eruption Appliance

- Facilitates eruption of impacted teeth
- Bondable to impacted cuspid intended to minimize irritation
- Round mesh bonding pad
- Gold plated

OAR/270-650

R760  
Per 5



## IPR Diamond Discs + Mandrel

Flexible design for both reduction and contouring.  
OAR/700-460.(Single) OAR/700-461 (Double)

R920  
Per 2 single

R920  
Per 2 double



## NiTi Spools

Sizes: .012, .014, .016  
OAR/226-081. OAR/226-082. OAR/226-083. OAR/226-084

R570  
Per spool



## NiTi Open/Closed Coil Springs/15''

Sizes: .010''x.030''.  
OAR/226-240 (Open)

R435  
Per 15'' spool



## Stainless Steel Open/Closed Coil Springs

Stainless steel. Sizes: .010''x.030''  
OAR/270-040 (Open) OAR/270-060 (Closed)

R225  
Open coil

R345  
Closed coil  
Per 40'' spool



## Bite Ramps

REL/270-216

R705  
Per 10

# Elastomerics & Accessories



				
Colours	Code	Power Chain	Power Chain	Power Chain
	Bite-Size Ties	Short	Long	Continuous
Gray	300-200	700-300	700-400	700-500
Clear	300-201	700-301	700-401	700-501
Neon Pink	300-202	700-302	700-402	700-502
Neon Green	300-203	700-303	700-403	700-503
Purple	300-204	700-304	700-404	700-504
Red	300-205	700-305	700-405	700-505
Royal Blue	300-206	700-306	700-406	700-506
Black	300-207	700-307	700-407	700-507
Orange	300-208	700-308	700-408	700-508
Yellow	300-209	700-309	700-409	700-509
White	300-210	700-310	700-410	700-510
Ivory	300-211	700-311	700-411	700-511
Emerald	300-212	700-312	700-412	700-512
Turquoise	300-213	700-313	700-413	700-513
Aqua/Light Blue	300-214	700-314	700-414	700-514
Silver	300-215	700-315	700-415	700-515
Gold	300-216	700-316	700-416	700-516
Magenta	300-217	700-317	700-417	700-517
Kelly Green	300-218	700-318	700-418	700-518
Marigold	300-219	700-319	700-419	700-519
*Sparkle Green	300-220	700-320	700-420	700-520
Smoke Gray	300-221	700-321	700-421	700-521
Teal	300-222	700-322	700-422	700-522
Fuchsia	300-223	700-323	700-423	700-523
Midnight Blue	300-224	700-324	700-424	700-524
Glow In Dark	300-225	700-325	700-425	700-525
Periwinkle	300-226	700-326	700-426	700-526
Carolina Blue	300-227	700-327	700-427	700-527
Baby Blue	300-228	700-328	700-428	700-528
*Sparkle Red	300-229	700-329	700-429	700-529
*Sparkle Blue	300-230	700-330	700-430	700-530
Baby Pink	300-231	700-331	700-431	700-531
Lilac	300-232	700-332	700-432	700-532
Pearl	300-233	700-333	700-433	700-533
Coral	300-234	700-334	700-434	700-534
	<b>R325</b> per 1080	<b>R280</b> per spool	<b>R280</b> per spool	<b>R280</b> per spool

All colours are approximate - \*Metallic colours shown are the base colour without the metal flake.



## Intra-Oral Elastics (Latex & Non-Latex)

PATIENT-SIZED QUANTITIES							
50 bags of 100 elastics/bag (5,000 elastics)							
Diameter	1/8"	3/16"	1/4"	5/16"	3/8"		
Bag Color							
	Purple	Green	Red	Blue	Orange	LATEX	R760
2.5oz. Light	811-000	811-003	811-006	811-009	811-012		
4.5oz. Med	811-001	811-004	811-007	811-010	811-013	NON-LATEX	R835
6.5oz Heavy	811-002	811-005	811-008	811-011	811-014		

All catalogue numbers are given for latex. For non-latex, add "NL" to number when ordering.



### Separating Elastics

These separators are radio opaque and made from elastomeric material. They are designed to separate teeth more rapidly due to it's faster recovery and are easily placed with the Deluxe Separating Plier. 1000 per package.  
OAR/325-302



R450  
1000 Pieces



### Rotation Wedges

- Designed to aid in rotating teeth more quickly (Clear or Gray).  
OAR/270-021. OAR/270-022

R630  
Pack of 100



### Bite Correction Elastics

Designed to aid in rotating teeth more quickly.  
MSD/60-01-330. MSD/60-01-430

R165  
Pack of 100



### Elastomeric Thread

- Unmatched strength and rebound
- Hollow and square variations are available for
- Available in .025" and .030" diameter sizes, in clear and gray colour variations
- Available in spools of 25 feet  
OAR/340-105/110.025  
OAR/340-125/130.030

R260  
per Spool



### Archwire Tubing

- Archwire tubing comes in a 25 foot spool and is designed to reduce irritation from the archwire
- Available in .025" and .030" diameter sizes, in clear and gray colour variations  
OA3/340-205/210.025  
OAR/340-225/230.030

R260  
per Spool



# Proximal Tool System

**DentaSonic**  
IPR Restorative Solution



## DentaSonic Starter Kit

Water cooled

For monolateral interdental reduction of the tooth size and the proximal finishing and polishing in orthodontics, aligners, and/or restorative. New water cooled oscillating Hand Piece with 4:1 ratio, in addition also a separate Head (rotating), for burs or polishers with RA Ø 2.35mm, and one measuring gauge with 6 thicknesses.

DSG4A-204-1Y

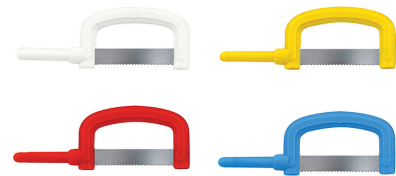
R21 850  
Starter kit  
(1 Year guarantee)



### DiaStrip

#### Indications

- Opening of the interdental contact points
- Widening of the interdental spaces in orthodontics by bilateral controlled tooth size reduction
- Resolve of minor crowding and treatment finishing in orthodontics
- Bilateral approximal enamel polishing



### DiaSaw

#### Benefits

- Efficient, safe, gentle, and agreeable opening of the interdental contact points
- Rapid and controlled reduction of the enamel
- Proximal contouring, finishing and polishing of both adjacent teeth in a single procedure with special flexible resin diamond coated strips



### Abrasive Strips

- Interproximal reduction a common activity in many Orthodontic cases
- The Abrasive strip kit provides manual operation which means accurate, safe control

HOR/304 (Single sided) HOR/314 (Double sided)

### Flexview IPR Strips

- Use for optimal visibility during interproximal stripping
- Gateway area allows easy access for IPR stripping
- Autoclavable in aluminum tube



## Essix

R300  
Single sided

R450  
Double sided

From R3 580  
Pack of 10

# Lab Supplies

# Essix



## Essix Ace Plastic

Primary Use: Aligners & Retainers

- Clear material has protective film on both sides
- Also used for tooth movement aligners and temporary anterior bridges
- Store in a cool dry place
- Average life: 18-24 months

R4 985  
100 Sheets

## Essix Plastics are Latex and BPA Free



## Essix Plus Plastic

Primary Use: Retainers & Bruxism Appliances

- Also use for aligners and temporary bridges
- Easy to form and trim, excellent wear and impact resistance
- Accepts acrylics/bonding agents
- Not made with natural rubber latex or BPA

R6 435  
80 Sheets

## Essix C+ Plastic

Primary Use: Aligners & Retainers for Bruxers

- Not for use with acrylics/bonding agents
- Average life: 24 months
- Also use for bite planes
- Latex and BPA free

R3 465  
100 Sheets



## Retainer Retrievers

- Retainer retrievers help to alleviate problems associated with removing clear appliances
  - Available in blue, green, orange, pink and white
- ESS/RR-ITSP. ESS/RR-ITSB

R575  
Pack of 10

# Lab Supplies

# Essix



## Essix Brand Plastics

### Essix A+ Plastic

Bite Planes

- Average life: 6 months
- Clear material has blue both sides
- Accepts acrylics/bonding agents
- Also used for night guards, clenchers and grinders
- Store in a cool, dry place

From R2 995  
100 Sheets



### Essix Dual Laminate

Primary Use: Tmj Splints

- Dual-sided construction: hard top surface withstands mastication pressure while soft bottom surface provides patience comfort
- Accepts bonding agents
- Also used for night guards, clenchers and grinders

R4 230  
12 Sheets



## Lab Knife

Good for cutting distal ends on Essix appliances and for cutting windows in aligners for tooth movement.  
ESS/18800

R560  
Each



## Border Polisher - Combination Set

- Smooths edges of appliances
- For use with Cordless Dremel or slow-speed handpiece at a maximum of 10 000 rpm

Fine - ESS/18971 Medium - ESS/18972  
Course - ESS/18973 Set - ESS/18970

R440  
Each

R1 125  
Set of 3



## Polishing Brushes

- Ideal for polishing edges of appliances
- Use with cordless dremel

Fine - ESS/18983 Medium - ESS/18982  
Course - ESS/18981

R1 325  
Pack of 12





## Multi-Adjustable Face Mask

Blue/Red/Pearl/Clear.

- Free flow air vents
- Maximum patient comfort
- Full range of motion
- Reinforced crossbar
- Fully adjustable
- Light weight
- Screws designed for increased durability

MSD/MR70-20-001

**R750**  
Each



## Cephalometric Tracing Paper

Smooth matte surface and transparent quality gives extra clean, sharp lines when tracing Radiographs.

OAR/700-058

**R1 190**  
per 100 sheets



## Impression Trays

- Colour coded for easy identification
- Unique mechanical lock system eliminates need for spray adhesives

**R350**  
Pack of 10



## Micro Brushes

Used to apply sealants, etchants or primers with sponge like tip.

MR/A400

**R1 740**  
per 4 tubes



## Retainer Cases

Y/DB18

R300  
Pack of 20



## Patient Relief Silicone Wax

- Medical Grade Wax
  - Temporary relief of appliance irritation
  - Longer lasting and easier to use
- OAR/700-104

R1 130  
Pack of 10



## Retainer Brite Cleaning Tablets

36 Boxes

- Retainer Brite Cleaning Tablets are specially formulated to help protect removable appliances by preserving clarity and cleanliness
- Cleans & Brightens Removable Dental Appliances
- Kills 99% of 7 Common Odor-Causing Bacteria
- Helps Remove Plaque & Tartar

ESS/RB-36 (Case)

R200  
(1 box of 36 tabs)

R4 080  
Bulk (1 x 24 boxes  
of 36 tabs)



## Aligner Tray Chewies

- Help patients seat aligners correctly. Chewies Aligner Tray
- Seaters are the same size as a standard dental cotton roll
- Made from soft plastic. Hygienic and easy to use

R350  
10 x 12 Seaters  
per pack

# Lab Supplies

# Essix



## Trimming Wheel

Trim appliances with this high-quality, rigid one-piece tool.  
ESS/18320

R975  
Each



## 3 1/4" Crown & Bridge Scissors

- Designed for precise trimming, especially for the palatal or lingual on full arch appliances
  - Autoclavable
- ESS/18002

R765  
Each



## 5 1/2" Mayo Scissors

- Ideal for cutting the labial outline on Essix® appliances with minimal jagged edges.
  - Curve of the scissors follows the curve of the arch
  - Autoclavable
- ESS/18001

R765  
Each



## 8" Universal Shears

- Excellent for quickly trimming excess plastic and more rigid materials.
  - Heavy-duty stainless steel
  - Serrated edges
  - Easy grip handles
- ESS/18005

R975  
Each



## 4" Curve Scissors

- Help obtain a clean, smooth edge on the lingual anterior region of Essix® appliances.
  - Ideal for bleaching trays
  - Autoclavable
- ESS/18004

R3 690  
Each



## Accentuator Tool

- Ensures a snap-in fit
  - Guides plastic down into the interproximal undercuts
- ESS/18943

R1 395  
Each



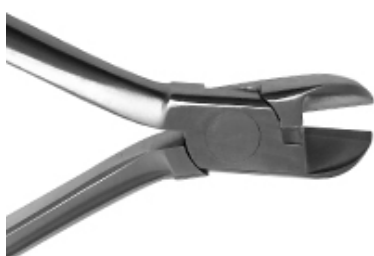
For the full range of instruments and prices contact us



## Distal End Cutter Safety Hold

This instrument cuts the wire close to the buccal tube and safely holds the distal end. The T.C. inserts ensure precision cutting, long wear and unsurpassed cutting performance.  
OAR/800-015

R1 890



## Hard Wire Cutter

This instrument is designed to cut larger wire up to .022 x .028.  
OAR/800-023

R1 890



## Mini Ligature Cutter

The fine tips on this model allow access into hard-to-reach areas. It is designed to cut soft-wire pins, elastics, and ligature wire up to .012.  
OAR/800-0163

R1 890



## Weingart Utility Plier

This instrument features matching serrated tips that hold wires firmly at a convenient working angle. Carefully tapered beaks fit easily between brackets and are rounded for safety and comfort. It can hold round and rectangular wires up to .022x.028.  
OAR/800-004

R1 845



## Ultimate Hook Crimping Plier

This preformed ligature tie is pre-trimmed to save time. Easily placed with a Mathieu Needle Holder or Shorty Twist Holder.  
OAR/800-083N

R1 845

# Infection Control



## Cleansing Wipes

HOSPITAL GRADE

For Neutralising Pathogens on ALL SURFACES. Does not contain any known Carcinogenic Agents. Medium Level: Kills 99.999% bacteria, viruses, fungi, mildew & algae. pH Neutral. Wipes can be disposed of in regular landfills as they are biodegradable.

Medical  
R135  
(Per 150)  
R235  
(Per 500)

Disinfectant  
R120  
(Per 150)  
R225  
(Per 500)



## Cold Sterilant

Cold sterilisation and disinfecting of surgical instruments.

R235  
(1 litre)  
R840  
(5 litre)



## Ecohand Soap

PH Neutral hand wash. For use in the industrial, commercial and household market.

R125  
(500 ml)  
R135  
(1 litre)  
R655  
(5 litre)



## Sterigel

Your hands take a beating when washed with harsh soap. Protect them with Sterigel.

R315  
(500 ml)  
R105  
(1 litre)  
R490  
(5 litre)



## Bacterinil

A broad spectrum, ready-to-use disinfectant.

R200  
(1 litre trigger)  
R560  
(5 litre)

# Infection Control



## Instrument Cleaner

For deep cleaning and conditioning of surgical instruments prior to sterilisation.

R250  
(1 Litre)



## Suction Cleaner

For deep cleaning and conditioning of surgical instruments prior to sterilisation.

R305  
(1 Litre)



## Bur Cleaner

Ready to use solution for the simultaneous disinfection and cleaning of rotary instruments in surgeries, laboratories and clinics.

R155  
(1 litre)

# Infection Control



## SteriScent 5 In 1

SteriScent (containing STERIFOG) is harmless to humans but deadly to microbes.

Eliminates (REMOVES) organic and all inorganic odour problems, NOT MASK THEM, by killing the germs that cause the odours and encapsulating the molecules creating odours.

- Bactericidal
- Fungicidal
- Virucidal
- Deodoriser
- Anti Allergenic
- SteriScent has been developed to create CLEAN AIR for the benefit of the consumer and the removal of harmful irritants and toxins present in indoor atmospheres

R95  
Plain (100ml)

R106  
Sunshine (100ml)



## MicroSolve

CLEANS, SANITISES & DISINFECTS IN ONE

MicroSolve provides a three-in-one formulation that cleans, sanitises and disinfects. MicroSolve is specifically formulated for conditions where natural oils, grease and petroleum jelly can be problematic. MicroSolve works effectively to eliminate all residues.

R180  
(1 litre trigger)

R590  
(5 litre)



## SteriFog

Anti-microbial misting involves the use of SteriFog and an aerosol micron diffuser.

Dry mist permeates an area of up to 50 cubic metres.

R190  
Fogger (500ml)

R155  
Spray (350ml)



## DeWax

A powerful, ready-to-use natural cleaner with an active ingredient called D-limonene. One of nature's most powerful solvents. D-limonene is derived from the peels of oranges, this means that not only is DeWax™ tough on grease, grime and dirt, but it is also made from completely renewable resources and leaves your home, shop, or workshop smelling citrus-fresh! DeWax dissolves most oils, waxes, glue and ink.

R105  
(250 ml)

R165  
(500 ml)

R315  
(1 litre)



## SELECTION AND USE OF DISINFECTANTS

The effectiveness of a disinfectant depends on many factors:

- Toxicity (all disinfectants are potentially harmful to animals and people – differences are only a matter of degree).
- Biodegradability (decomposition of organic material by microorganisms).
- Corrosivity (the destructive, harmful, deleterious effect on fabric and metals).
- Activity in organic matter and other compounds, such as soaps (is it neutralised by organic matter?).
- Residual activity (length of continued activity post application).
- Efficacy (speed, and scope of viruses, bacteria and fungi).
- Contact time (Time required for surface to remain wet in order for germicidal activity to take place.)
- Price (quality comes at a cost).

## PROPERTIES OF CHEMICAL SANITISERS AND DISINFECTANTS

Corrosiveness		Residual activity	Effect of hard water on sanitisation	Effect of organics	Germicidal activity	Activity against gram positive bacteria	Activity against gram negative bacteria	Activity against spores
Hypochlorite	Yes	Limited	Moderate tolerance	Inactivated	High	Highly effective	Highly effective	Moderately effective
QAC / DDAC (Quaternary Ammonium Chloride)	Yes	Moderate	Activity reduced	Moderately stable	Varied	Highly effective	Highly effective	Ineffective
Acid Sanitisers	Yes	Moderate	Activity reduced	Low reactivity	Very good	Highly effective	Highly effective	Ineffective
Aldehydes	No	Poor or moderate	No effect	Activity reduced	Moderate	Highly effective	Highly effective	Highly effective
Alcohols	No	No	No effect	Loss of activity	Very good	Moderately effective	Highly effective	Ineffective
Phenolics	Moderate	Moderate	Moderate tolerance	Moderately stable	High, better than hypochlorite	Highly effective	Highly effective	Moderately effective
Peroxyacetic Acid (PAA)	Moderate	Moderate	Limited effect	Reacts and loses reactivity	High, better than hypochlorite	Moderately effective	Highly effective	Highly effective
Chlorine Dioxide	Yes	No	No effect	Little influence	High, better than hypochlorite	Highly effective	Highly effective	Moderately effective
Amine Guanide QUADEX®	No	High	Limited effect	Little influence	High	Highly effective	Highly effective	Highly effective

## RELATIVE HEALTH AND ENVIRONMENTAL HAZARDS OF DISINFECTANTS

	Health hazard	Environmental hazard	Total hazard	Total rank
Chlorine Dioxide	1.8	1.5	3.3	41
Hypochlorite	1.2	1.5	2.7	42
Phenolics	1.7	0.8	2.5	50
Aldehydes	1.5	1.2	2.7	55
QAC / DDAC (Quaternary Ammonium Compounds)	1.0 2.0	1.5 2.0	2.5 4.0	45* 71*
Acid Sanitisers	1.7	1.0	2.7	81*
Peroxyacetic Acid (PAA)	1.7	1.0	2.7	81*
Alcohols	1.7	1.3	2.5	86
Amine Guanidine QUADEX®	Not ranked as hazardous	Not ranked as hazardous	Not ranked as hazardous	Not ranked as hazardous





## LNG Dental

**SALES:** Alecia 067 317 0723 | [alecia@lngdental.co.za](mailto:alecia@lngdental.co.za)

**OFFICE:** (011) 979 0069 | [chantelle@lngdental.co.za](mailto:chantelle@lngdental.co.za)

 067 317 0723  @lngdental  lng\_dental  [www.lngdental.co.za](http://www.lngdental.co.za)

